
M1042

**10.4" Intel® Atom™ N2800
Mobile Clinical Assistant**

User's Manual

Version 1.0

This page is intentionally left blank.

Contents

Copyright Notice.....	i
Declaration of Conformity	i
About This User's Manual	iii
Technical Support	iii
Important Safety Instructions.....	iv
Classification	v
Disposing of Your Old Product	v
Introducing the Rechargeable Battery Pack.....	vi
Warranty	viii
Chapter 1 - General Information.....	1
1.1 Introduction	2
1.2 Packing List	2
1.3 Ordering Information	3
1.4 Specifications	5
1.5 Overview	7
1.6 Dimensions	8
Chapter 2 - Installation and Configuration.....	9
2.1 Getting Started	10
2.1.1 Locating Controls and Connecting Ports	11
2.1.2 Periodic Cleaning & Disinfection	16
2.1.3 Periodic Maintenance	17
2.2 Replace the External Battery.....	18
2.3 DC Power Supply	20
2.4 SIM Card Installation.....	21
2.5 Hand Strap Installation	24
2.6 Driver Installation	25
2.6.1 Chipset.....	26
2.6.2 VGA Graphics.....	28
2.6.3 Audio.....	31
2.6.4 LAN.....	32
2.6.5 WiFi	34
2.6.6 Bluetooth	34
2.6.7 RFID (optional)	39
2.6.8 Touch Screen	40
2.6.9 Docking Station (optional)	43
2.6.10 Function Keys	44
2.6.11 Smart Card (optional)	50
2.6.12 Digitizer (only for M1042R).....	52
2.6.13 3G Driver Installation (optional)	53

2.6.14 3G AP Installation (optional)	53
2.7 Basic Operation.....	56
2.7.1 Touch Screen Calibration.....	56
2.7.2 Gesture Setting	59
2.7.3 Function Key Configuration.....	61
2.7.4 RFID (optional)	64
2.7.5 Camera.....	68
2.7.6 BarCode Scanner.....	70
2.7.7 Smart Card Reader (optional)	72
2.7.8 HSUPA (optional)	74
2.7.9 Bluetooth	75
2.7.10 Tablet Properties (only for M1042R).....	76
Chapter 3 - BIOS.....	79
3.1 BIOS Main Setup	80
3.2 Advanced Settings	82
3.2.1 CPU Configuration.....	83
3.2.2 IDE Configuration	84
3.2.3 USB Configuration.....	85
3.3 Chipset Settings.....	86
3.4 Boot Settings	87
3.5 Security	88
3.6 Exit Options	90
Appendix - Optional Accessories	91
1. RAM-ball Mount Docking Station (VMC-1040)	92
1.1 Introduction	92
1.2 Installing M1042 on VMC-1040.....	96
1.3 Removing M1042 from VMC-1040	98
1.4 Charging via VMC-1040	98
1.5 VESA Wall-mounting	99
1.6 VESA Mount Transfer Bracket (VSB-1040)	100
2. Conversion Bracket (DMK-1040).....	101
2.1 Introduction	101
2.2 Installing M1042 on DMK-1040	102
3. Desktop Docking Station (DTC-1040).....	103
3.1 Introduction	103
3.2 Installing M1042 on DTC-1040	107
3.3 Charging via DTC-1040.....	109

Copyright Notice

All Rights Reserved.

The information in this document is subject to change without prior notice in order to improve the reliability, design and function. It does not represent a commitment on the part of the manufacturer.

Under no circumstances will the manufacturer be liable for any direct, indirect, special, incidental, or consequential damages arising from the use or inability to use the product or documentation, even if advised of the possibility of such damages.

This document contains proprietary information protected by copyright. All rights are reserved. No part of this manual may be reproduced by any mechanical, electronic, or other means in any form without prior written permission of the manufacturer.

Declaration of Conformity

CE

The CE symbol on your product indicates that it is in compliance with the directives of the Union European (EU). A Certificate of Compliance is available by contacting Technical Support.

This product has passed the CE test for environmental specifications when shielded cables are used for external wiring. We recommend the use of shielded cables. This kind of cable is available from ARBOR. Please contact your local supplier for ordering information.

FCC Class B

This device complies with Part 18 of the FCC Rules. Operation is subject to the following two conditions:

- (1) This device may not cause harmful interference, and
- (2) This device must accept any interference received, including interference that may cause undesired operation.

NOTE:

This equipment has been tested and found to comply with the limits for a Class B digital device, pursuant to Part 18 of the FCC Rules. These limits are designed to provide reasonable protection against harmful interference in a residential installation. This equipment generates, uses and can radiate radio frequency energy and, if not installed and used in accordance with the instructions, may cause harmful interference to radio communications. However, there is no guarantee that interference will not occur in a particular installation. If this equipment does cause harmful interference to radio or television reception, which can be determined by turning the equipment off

and on, the user is encouraged to try to correct the interference by one or more of the following measures:

- Reorient or relocate the receiving antenna.
- Increase the separation between the equipment and receiver.
- Connect the equipment into an outlet on a circuit different from that to which the receiver is connected.
- Consult the dealer or an experienced radio/TV technician for help.

IEC 60601-1/EN60601-1/EN60601-1-2

This product complies with the system standard IEC 60601-1 Medical Electrical Equipment Part 1: General Requirements for Safety. And therefore, the product is exclusively interconnected with IEC 60601-1 certified equipment in the patient environment.

Equipment connected to the analog or digital interfaces of the unit must comply with the respective IEC standards (e.g. IEC 60601-1 for medical equipment). Furthermore all configurations shall comply with the current version of the standard for SYSTEMS IEC 60601-1-1. Everybody who connects additional equipment to the signal input part or signal output part configures a medical system, and is therefore responsible that the system complies with current version of the requirements of the system standard IEC 60601-1-1. If in doubt, consult the technical service department or your local representative.

RoHS

ARBOR Technology Corp. certifies that all components in its products are in compliance and conform to the European Union's Restriction of Use of Hazardous Substances in Electrical and Electronic Equipment (RoHS) Directive 2002/95/EC.

The above mentioned directive was published on 2/13/2003. The main purpose of the directive is to prohibit the use of lead, mercury, cadmium, hexavalent chromium, polybrominated biphenyls (PBB), and polybrominated diphenyl ethers (PBDE) in electrical and electronic products. Member states of the EU are to enforce by 7/1/2006.

ARBOR Technology Corp. hereby states that the listed products do not contain unintentional additions of lead, mercury, hex chrome, PBB or PBDB that exceed a maximum concentration value of 0.1% by weight or for cadmium exceed 0.01% by weight, per homogenous material. Homogenous material is defined as a substance or mixture of substances with uniform composition (such as solders, resins, plating, etc.). Lead-free solder is used for all terminations (Sn(96-96.5%), Ag(3.0-3.5%) and Cu(0.5%)).

SVHC / REACH

To minimize the environmental impact and take more responsibility to the earth we live, Arbor hereby confirms all products comply with the restriction of SVHC (Substances of Very High Concern) in (EC) 1907/2006 (REACH --Registration, Evaluation, Authorization, and Restriction of Chemicals) regulated by the European Union. All substances listed in SVHC < 0.1 % by weight (1000 ppm).

About This User's Manual

This user's manual provides general information and installation instructions about the product. This User's Manual is intended for experienced users and integrators with hardware knowledge of personal computers. If you are not sure about any description in this booklet. Please consult your vendor before further handling.

Technical Support

All ARBOR products are built to the most accurate specifications to ensure reliable performance in the harsh and demanding conditions typical of industrial environments. Whether your new equipment is destined for the laboratory or the factory floor, you can be assured that your product will provide the reliability and ease of operation. Your satisfaction is our primary concern. We want you to get the maximum performance from your products. So if you run into technical difficulties, we are here to help. For the most frequently asked questions, you can easily find answers in your product documentation. These answers are normally a lot more detailed than the ones we can give over the phone. So please consult this manual first. If you still cannot find the answer, gather all the information or questions that apply to your problem, and with the product close at hand, call your dealer. Our dealers are well trained and ready to give you the support you need to get the most from your products. In fact, most problems reported are minor and are able to be easily solved over the phone. We are always ready to give advice on application requirements or specific information on the installation and operation of any of our products. Please do not hesitate to call or e-mail us at:

<http://www.arbor.com.tw>
E-mail: info@arbor.com.tw

Contact Information

Add: 10F., No.700, Zhongzheng Rd., Zhonghe Dist., New Taipei City
235, Taiwan
TEL: 886-2-8226-9396

Important Safety Instructions

Read these safety instructions carefully:

1. Read all cautions and warnings on the equipment.
2. Place this equipment on a reliable surface when installing. Dropping it or letting it fall may cause damage.
3. Make sure the correct voltage is connected to the equipment.
4. For pluggable equipment, the socket outlet should be near the equipment and should be easily accessible.
5. Keep this equipment away from humidity.
6. Disconnect this equipment from the A/C outlet before cleaning it. Use a moist cloth. Do not use liquid or sprayed detergent for cleaning.
7. To fully disengage the power to the unit, please disconnect the power from the AC outlet.
8. Do not scratch or rub the screen with a hard object.
9. Never use any of the solvents, such as Thinner Spray-type cleaner, Wax, Benzene, Abrasive cleaner, Acid or Alkaline solvent, on the Medical Display. Harsh chemicals may cause damage to the cabinet and the touch sensor.
10. Remove dirt with a lightly moistened cloth and a mild solvent detergent. Then wipe the cabinet with a soft dry cloth.
11. The openings on the enclosure are for air convection and protect the equipment from overheating. **DO NOT COVER THE OPENINGS.**
12. Position the power cord so that people cannot step on it. Do not place anything over the power cord.
13. If the equipment will not be used for a long time, disconnect it from the power source to avoid damage by transient overvoltage.
14. Never pour any liquid into openings. This may cause fire or electrical shock.
15. Never open the equipment. For safety reasons, the equipment should be opened only by qualified service personnel.
16. If one of the following situations arises, get the equipment checked by service personnel:
 - a. The power cord or plug is damaged.
 - b. Liquid has penetrated into the equipment.
 - c. The equipment has been exposed to moisture.
 - d. The equipment does not work well, or you cannot get it to work according to the user's manual.
 - e. The equipment has been dropped or damaged.
 - f. The equipment has obvious signs of breakage.

-
17. The sound pressure level at the operator's position, according to IEC 704-1:1982, is no more than 70dB(A).
 18. Keep this User's Manual for later reference.
 19. DO NOT LEAVE THIS EQUIPMENT IN AN UNCONTROLLED ENVIRONMENT WHERE THE STORAGE TEMPERATURE IS BELOW -20° C (-4° F) OR ABOVE 60° C (140° F). THIS MAY DAMAGE THE EQUIPMENT.



UL Class II Classification: With respect to electric shock, fire and mechanical hazards only, in accordance with UL-60601-1 and CAN/CSA C22.2 No. 601.1.

Classification

- Powered by Class II power supply
- No applied part
- Degree of protection against the ingress of water: IPX0
- Mode of operation: Continuous
- The equipment is not suitable for use in the presence of a flammable anesthetic mixture with air or nitrous oxide: Not AP or APG Category.

Disposing of Your Old Product

- **Within the European Union**



EU-wide legislation, as implemented in each Member State, requires that waste electrical and electronic products carrying the mark (left) must be disposed of separately from normal household waste.

This includes monitors and electrical accessories, such as signal cables or power cords. When you need to dispose of your display products, please follow the guidance of your local authority, or ask the shop where you purchased the product, or if applicable, follow any agreements made between yourself. The mark on electrical and electronic products only applies to the current European Union Member States.

- **Outside the European Union**

If you wish to dispose of used electrical and electronic products outside the European Union, please contact your local authority so as to comply with the correct disposal method.

Introducing the Rechargeable Battery Pack

With very little care, you can maximize the life and lifespan of your M1042's battery. Most importantly, only use your M1042 in its ideal operating temperature (See "M1042 Specifications") – do not leave it in a hot trunk during the summer. And always replace battery with the provided one or **you may risk the danger of explosion if incorrect battery type is used**. In addition, dispose of used batteries according to instructions in previous paragraph.

- **Important Terms to Understand**

"Battery life" means the time your M1042 will run before it must be recharged (sometimes this is also called "playtime" or "runtime").

"Battery lifespan" means the total amount of time your battery will last before it must be replaced.

- **Using Your M1042 for the First Time**

Be sure to fully charge (approx. 4 hours) your M1042 when you plug it in for the first time.

- **Long-Term Storage & Maintenance**

If you do not plan to use your M1042 battery for more than three months, it is recommended that you store the battery separately, fully charged, and then recharge it every three month. If you store an uncharged battery it could fall into a deep worn-out state which would render it incapable of holding any charge. Be sure to store your M1042 and battery at the proper temperature. (See "M1042 Specifications.")

- **Battery Lifespan**

The removable batteries for M1042 are designed to retain up to 80% of their original capacity after 300 charging and recharging cycles when properly maintained. You may choose to replace your battery when it no longer holds sufficient charge to meet your needs.

Symbols Description



This symbol of “CAUTION” indicates that there is a danger of injury to the user or a risk of damage to the product, should warning notices be disregarded.



Battery Recycle



UL Classified certification



Power on/off



UL Class II safety symbol



Indoor Use Only



This symbol indicates electrical warning.



Change of electric current:
Internal: positive current
External: negative current



Refer to the operating instructions.

Warranty

This product is warranted to be in good working order for a period of one year from the date of purchase. Should this product fail to be in good working order at any time during this period, we will, at our option, replace or repair it at no additional charge except as set forth in the following terms. This warranty does not apply to products damaged by misuse, modifications, accident or disaster.

Vendor assumes no liability for any damages, lost profits, lost savings or any other incidental or consequential damage resulting from the use, misuse of, or inability to use this product. Vendor will not be liable for any claim made by any other related party.

Vendors disclaim all other warranties, either expressed or implied, including but not limited to implied warranties of merchantability and fitness for a particular purpose, with respect to the hardware, the accompanying product's manual(s) and written materials, and any accompanying hardware. This limited warranty gives you specific legal rights.

Return authorization must be obtained from the vendor before returned merchandise will be accepted. Authorization can be obtained by calling or faxing the vendor and requesting a Return Merchandise Authorization (RMA) number. Returned goods should always be accompanied by a clear problem description.

Chapter 1

General Information

1.1 Introduction

This medical tablet, M1042, powered by soldered onboard Intel® Atom™ N2800 Processor, comes with a resistive single-touchscreen (M1042R) & projective capacitive touchscreen (M1042C), provided with a highly protective layer for the touch and compatible with Windows 7 operating system. The slip-free grip at the handle is designed for safe carriage. As an ideal clinical-convenient tablet, the M1042 features dual batteries; one internal battery and one hot-swappable external rechargeable battery that can stand long operating time at approximately 6.5 hours. Regarding mobile communication, the M1042 can easily connect to Bluetooth, WLAN and optional HSUPA, which give it great accessibility for eHealthcare or portable medical care. Other integrated vertical application functions include 2D Barcode Scanner, 2.0 Front & Rear Megapixel Cameras, optional RFID Reader and optional Smart Card Reader.

- eHealthcare and Clinical Assistant Application
- Lifetime Guarantee Anti-bacterial Protection (Against Escherichia Coli & Staphylococcus Aureus)
- Soldered Onboard Intel® Atom™ Dual Core N2800 Processor
- EN60601, UL60601-1 Certified
- Redundant Battery (Internal + Hot-swappable External Battery) w/ Long Battery Life (6.5 hrs Max.)
- Slim Appearance - Ultra-light Weight (1.3kg) and Ultra-slim (26mm); Slip-free Grip for Easy Handling
- Integrated Applications: 2D Barcode Scanner, 2.0 Megapixels Camera, Bluetooth

1.2 Packing List

After opening the package, carefully inspect the contents. If any of the items is missing or appears damaged, please contact with your local dealer or distributor. The package should contain the following items:



1 x M1042



HSK-1040
Hand Strap Kit



Driver CD



User's Manual



1 x 60W Medical Grade AC/DC adapter kit



eBAT-1040
External 1880mAH 4-cell Li-battery



DGT-1040
10.4" Digitizer with Battery Free Pen (only for M1042R)

1.3 Ordering Information

M1042R	10.4" MCA tablet with Resistive Touch Screen, WiFi, BT, Front & Rear Cameras, Digitizer, External Battery, Internal Battery, Barcode Scanner
M1042C	10.4" MCA tablet with Projective Capacitive Touch Screen, WiFi, BT, Front & Rear Cameras, External Battery, Internal Battery, Barcode Scanner

The following items are normally optional, but some vendors may include them as a standard package, or some vendors may not carry all the items.

Optional Accessories



VMC-1040
RAM-ball mount docking station



DMK-1040
Bracket used to convert the VMC-1040 to Desktop station



DTC-1040
Desktop docking station



VSB-1040
VESA Mount Transfer Bracket for VMC-1040

Optional Configuration (Configure to Order Service)



SMR-1040
Smart card reader module kit



RFID-1040
RFID module kit



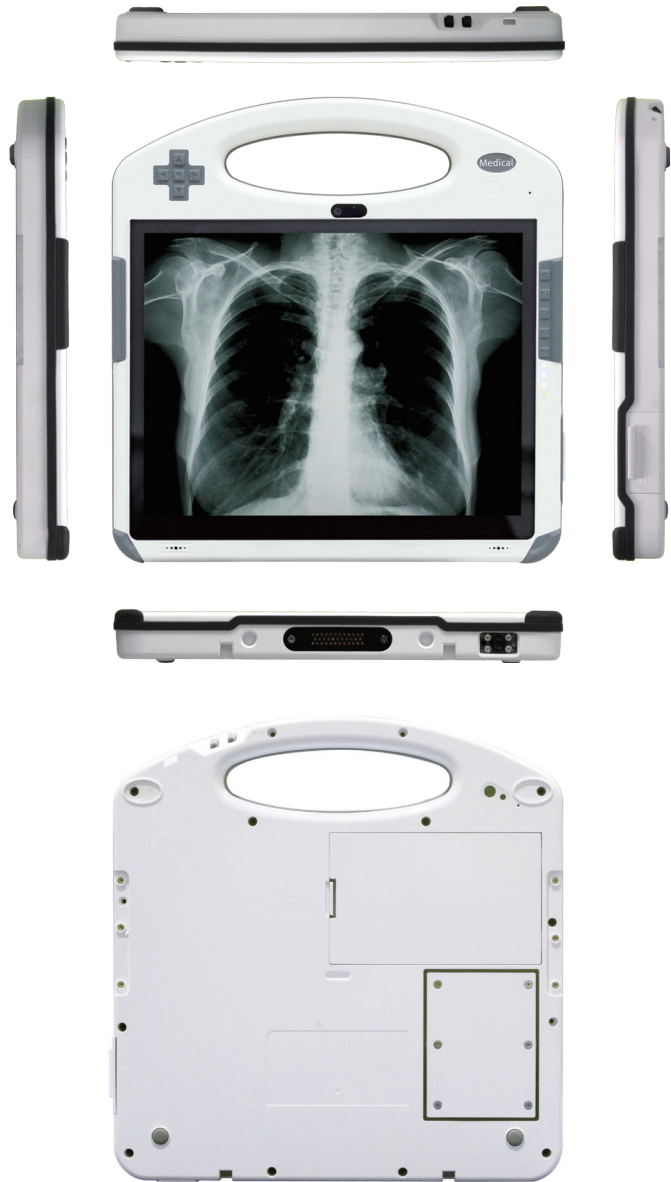
HSUPA-1040
HSUPA 3.75G module kit

1.4 Specifications

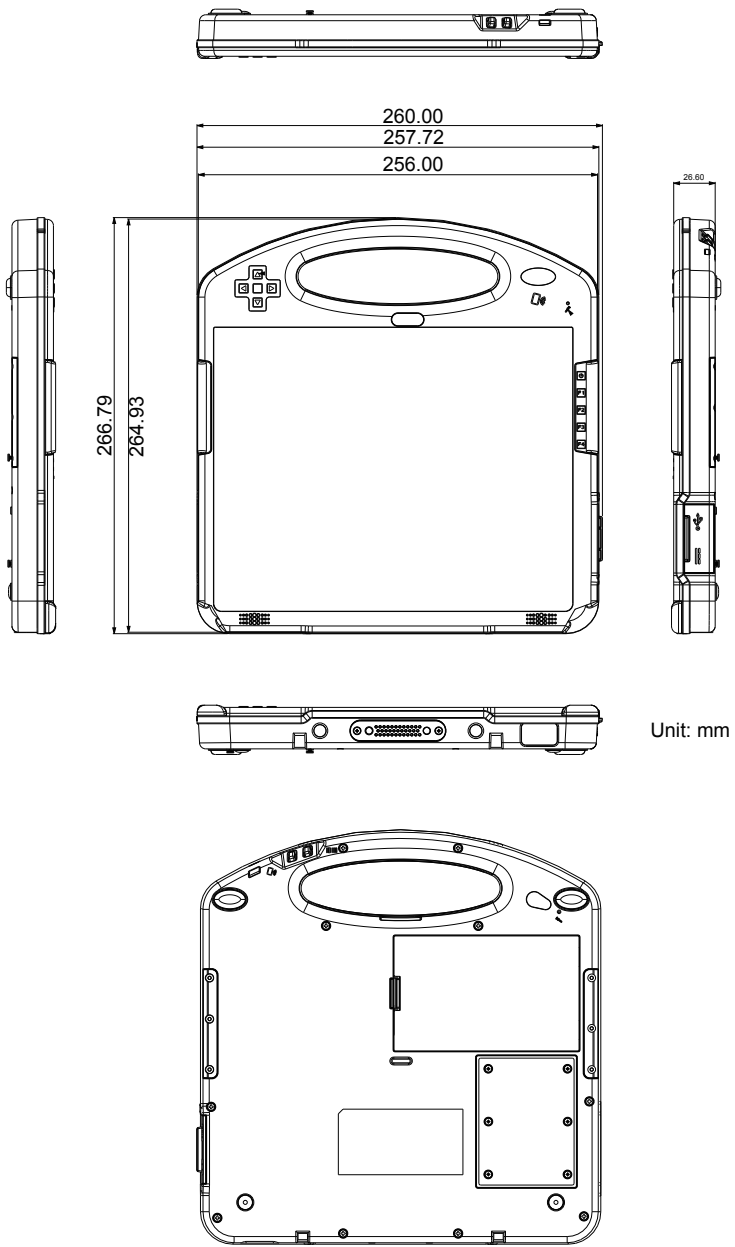
System	
CPU	Intel® Atom™ N2800 1.86GHz processor
Memory	2GB DDR3 SO-DIMM memory module installed
Chipset	Intel® NM10
Audio	2 x 1.5W Speakers, 1 x built-in Digital Microphone
Storage	32GB mSATA SSD installed
Peripherals and Devices	
USB Port	1 x USB 2.0 port
Camera	1 x 2.0 megapixels CMOS camera (front) 1 x 2.0 megapixels CMOS camera w/ auto-focus (rear)
Wi-Fi	1 x 802.11 a/b/g/n Mini PCIe Wireless LAN card
Ethernet	1 x Realtek RTL8111E Gigabit Ethernet controller (via DTC-1040 or VMC-1040)
RFID	13.56MHz RFID reader with ISO 14443A/14443B/ 15693 support (optional)
GSM/UMTS	1 x HSUPA 3.75G (optional)
Bluetooth	1 x Bluetooth 2.1 module
Barcode Scanner	1 x 2D Barcode Scanner
Smart Card Reader	1 x Smart Card Reader (optional)
Button & Indicator	
Function Key	1 x 5-way function key
	1 x RFID on/off button
	1 x Barcode scan trigger button
	4 x Programmable function keys (F1 ~ F4)
LED Indicator	1 x Battery status LED
	1 x Bluetooth LED
	1 x WLAN/RFID on/off LED
	1 x Power on/off LED
Power Button	1 x Power on/off button with indicative LED ring

LCD Display	
Size/Type	10.4" TFT Active Matrix Panel
Max. Resolution	1024 x 768 (XGA) w/ 262,144 colors
Luminance	340 cd/m ² (typ.)
Contrast Ratio	600:1 (typ.)
Viewing Angle	+89° ~ -90° (H), +89° ~ -90° (V)
Backlight Type	LED
Touch Screen	
Type	Resistive Touch Screen for M1042R
	Projective Capacitive Touch Screen, adopting Corning® Gorilla® Glass tech. for M1042C
Digitizer	10.4" Electromagnetic Digitizer (only for M1042R)
Power Requirement	
Adapter Input	100 ~ 240 VAC (Full Range)
Adapter Output	20VDC, 3.0A, 60W
Battery Type	Li-battery pack
Battery Capacity	Internal 1880mAH 3-cell External 1880mAH 4-cell
Battery Operating Time	6.5 hours (Max.)
Mechanical & Environment	
Operating Temp.	0 ~ 40°C (32 ~ 104°F)
Storage Temp.	-20 ~ 60°C (-4 ~ 140°F)
Dimensions (W x D x H)	256 x 26 x 255 mm (10.08" x 1.02" x 10.04")
Weight (Net)	1.3 kg (2.8 lb) w/ batteries (internal + external)
Regulatory	CE, FCC Class B, EN60601-1, EN60601-1-2, UL60601-1
Vibration	5 ~ 500Hz, 3G random operation
Shock	30G peak (11m/sec)
Operational Altitude	below 2000m

1.5 Overview



1.6 Dimensions





Chapter2

Installation and Configuration

2.1 Getting Started

This chapter is intended to give users the information about how to utilize the various functions of the medical PC. To be familiar with using the computer, please take a few minutes to read this manual.

Before installing the operating system and driver utilities, you should prepare your own USB CD-ROM drive and the power adapter included in the accessory kit. When the operating system on your computer is ready, please use the accompanying Driver CD to install the drivers and utilities for respective devices. The following sections will guide you through the drivers and utilities installation step by step.



M1040 Medical PC



Power Adapter & Power Cord



USB CD-ROM Drive



USB Keyboard & Mouse



Driver CD



USB Hub

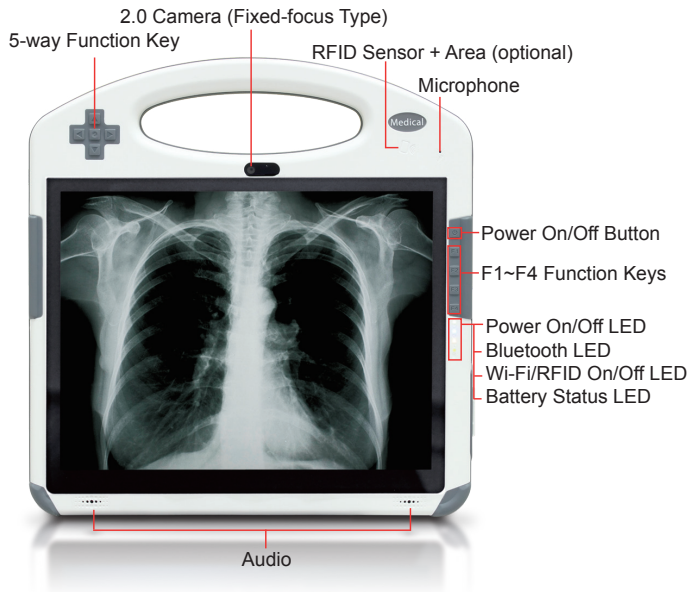


Hand Strap Kit

2.1.1 Locating Controls and Connecting Ports

Please refer to the following images for the locations of I/O ports, function buttons and the external battery.










Front View



Power ON/OFF: the power button to turn on/off the PC (must hold the buttons for about 2 seconds)

Function Keys

The four function keys (F1 ~ F4) and 5-way function key on front panel are effective after users have correctly installed function key driver (see Section 2.6.10). These keys can also be re-defined by users. Should you want to change its settings, please refer to Section 2.7.3.

Key	Default Function
 F1	3G On/Off
 F2	WiFi On/Off
 F3	Adjust Volume
 F4	Turn On/Off Arbor System Suite Program
 Up	Up
 Down	Down
 Left	Left
 Right	Right
 Enter	Enter

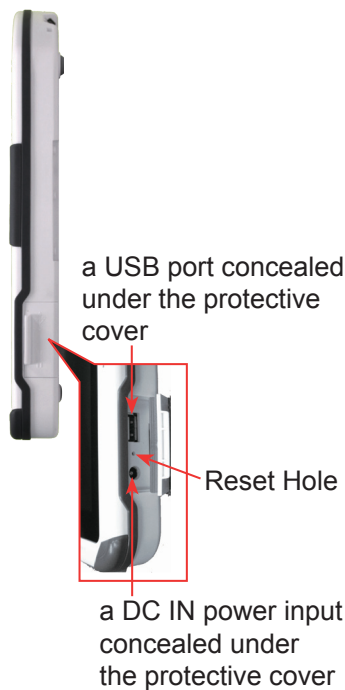
LED Indicators

On the right side are 4 system status LEDs. They have different meanings individually. From top to bottom, they are:

LED	Color	Description
Power	Green	illuminated as the tablet is turned on
Bluetooth	Blue	illuminated as Bluetooth is activated
WiFi / RFID	Green	illuminated as WiFi is activated
	Amber	illuminated as RFID is activated
	Yellow	illuminated as both are activated
Battery	Green-Red	check next table

Battery Charging	Red	Blinking	Battery charge level is below 20%
	Amber	Blinking	Battery charge level is between 20%~70%
	Green	Blinking	Battery charge level is between 70%~95%
		On	Battery charge level exceeds 95%
Battery Discharging	Red	On	Battery charge level is below 20%
		Blinking	Battery charge level is below 10%
	Amber	On	Battery charge level is between 20%~70%
	Green	On	Battery charge level exceeds 70%

Right Side



Note: Use the reset switch if your computer can't be shut down normally. Insert a paper clip to press the switch. This method is considered only if you have tried pressing Ctrl+Alt+Delete or holding down the power button for four to five seconds first.

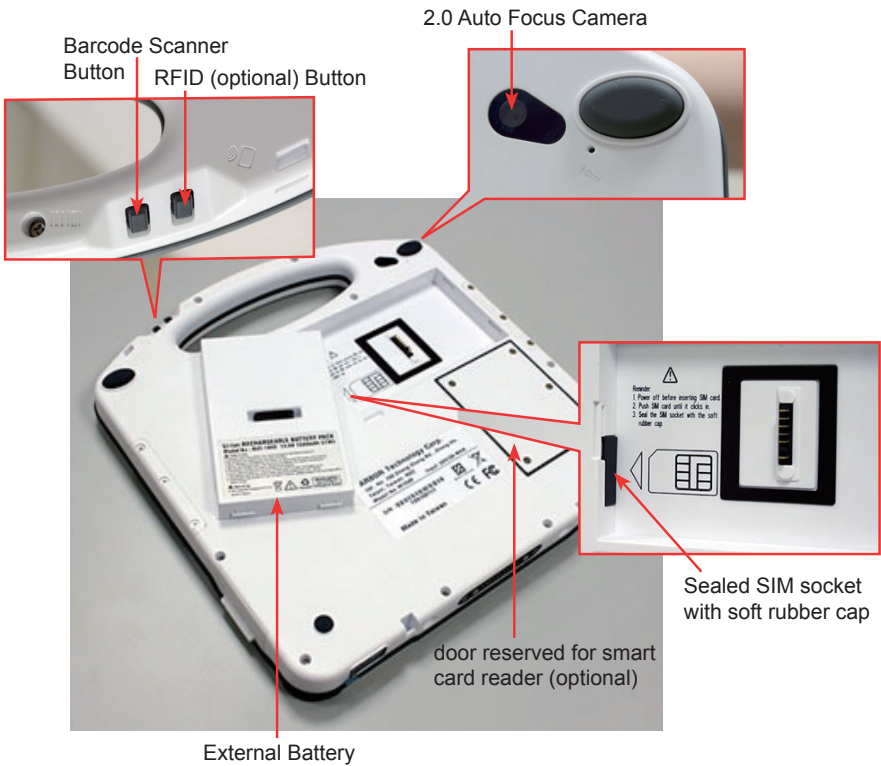
Top Side



Bottom Side



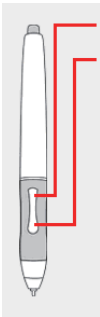
Back View





SMR-1040 (optional smart card reader module kit)

Digitizer Pen (only for M1042R)



Note: If you want to change the digitizer and resistive touch functions. Please refer to Section 2.7.1.



electromagnetic digitizer with resistive touch

2.1.2 Periodic Cleaning & Disinfection

This panel PC is generally employed in medical environment, for example, hospitals, as bedside infotainment (information plus entertainment). It is strongly recommended that users follow the cleaning and disinfection instructions described below to ensure proper maintenance activities.

1. Always power off your unit first, when you clean or disinfect it.
2. To wipe the outer case, use lint-free cloth, lightly moistened with warm water and a mild, non-abrasive cleaning solution made of either:
 - 70% isopropyl alcohol
 - 10% bleach solution
 - Dimethyl ethylbenzyl ammonium chlorides 0.125%, dimethyl benzyl ammonium chlorides 0.125%, Isopropyl alcohol 14.850% (Sani-Cloth®)
 - Isopropanol 17.2%; Diisobutylphenoxyethyl dimethyl bezyl ammonium chlorides 0.28% (CaviCide®)
3. The touch screen can be wiped down (e.g. to remove fingerprints) during operation while powered on using standard computer screen solution.
4. Use dry cloth to clean the rear panel and bottom, especially the areas around the connectors.

Caution:

- Do not spill liquids on or around the Medical PC.
- Do not use other solutions than the ones mentioned above.
- Do not touch, press or rub the display panel with abrasive cleaning compounds, instruments, brushes, or rough-surface materials.
- Never spray cleaning liquids or foam onto the Medical PC or soak it for cleaning.
- Do not use solvents to clean the unit.
- Do not clean, disinfect, or sterilize any part of the system by autoclaving or with the use of ethylene oxide gas; doing so may damage the unit.
- Never spray or squirt any type of liquid onto the Medical PC; if a spray, gel or foam is needed, spray the liquid onto a cloth and then use the cloth to wipe or rub down the component.
- Always avoid contamination to minimize the need for disinfectants.
- Do not spill, spray, or squirt liquids to the power block and the power cable.

2.1.3 Periodic Maintenance

Power Inspection

Inspect the power cable and power block each year for any kind of damage, overheating or corrosion. Damaged power cable or the power block could negatively affect the normal operation of the tablet PC, and thus should be replaced with a new one.

Note: Turn off the unit before inspecting the power cable or power block.

Battery Inspection

Please keep in mind that “Battery life” means the time the tablet PC will run before it must be recharged, while “Battery lifespan” means the total amount of time the battery will last before it must be replaced.

Please refer to the “LED Indicators (in Section 2.1.1)” for more details on how to check the battery status.

First Time Usage

Fully charge the unit when you use it for the first time to ensure proper operation.

Long-term Storage and Maintenance

The unit contains a lithium-ion battery that has a shelf life of 2 months when installed in the unit and 1 year when removed from the unit. If the battery fully discharges during storage, then the battery will have to be replaced. If the unit will not be used for an extended period of time; then the battery should be fully charged and removed from the unit. For long-term storage, always store the battery separate from the unit.

You can maximize the lifespan of the unit by ensuring that it is used or stored within its ideal operating temperature and always avoid closed, hot locations.

Note: The lithium ion battery has a shelf life of 1 year from the date of manufacture. The battery must be installed in the unit and fully charged within 1 year.

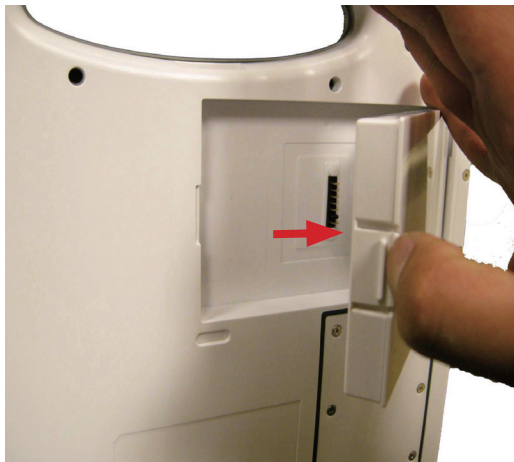
2.2 Replace the External Battery

1. Turn off the medical tablet PC; disconnect the power adapter and take off hand strap (See Section 2.5 for details).
2. Unplug and remove all the peripheral devices that are connected to the medical PC.
3. Position your thumb at the clip of the battery.

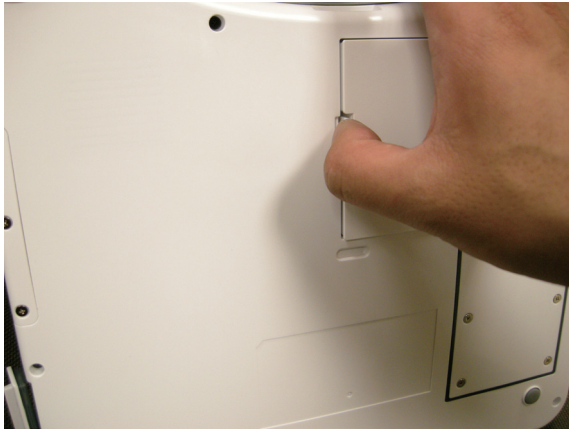
The clip of the battery



4. Use your finger to remove the battery.



- When installing the battery back into its holder, make sure it totally fits into battery holder (you may hear a light "click" sound). It is strongly recommended that you use the provided external battery.

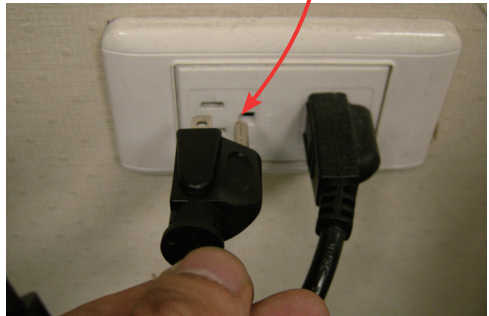


Note: The safety caution and model information are recorded on the label of the battery.



2.3 DC Power Supply

Connect the power adapter. It is strongly recommended that you use the provided power adapter to connect the tablet PC with the power outlet, especially when you are using it for the first time, in order to ensure the power supply.



2.4 SIM Card Installation

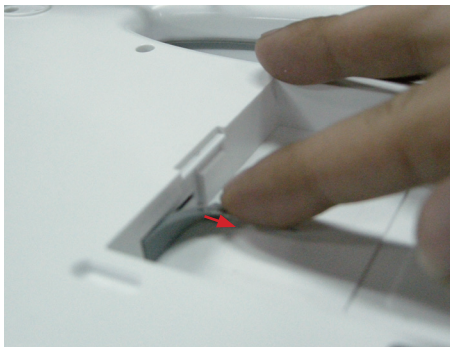
1. Make sure your medical PC is turned off and then remove the battery at the back of the tablet.



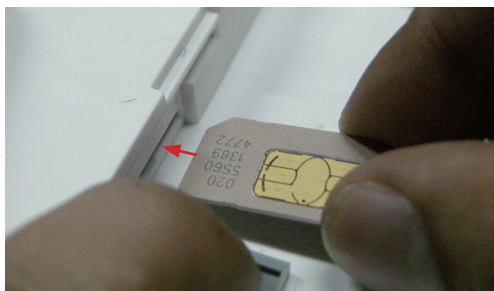
2. There is a SIM card slot hidden under a soft rubber cap.



3. Use a finger to open it as the picture below.



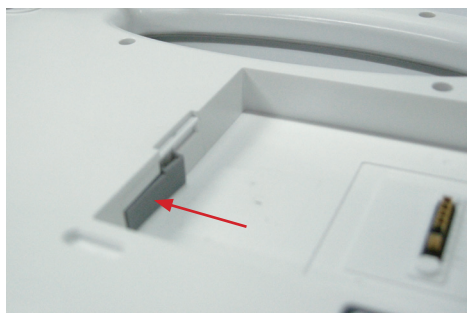
4. Aim the SIM card slot and insert the SIM card. Be sure to insert the SIM card in the correct direction.



5. Push the SIM card all the way to the end until you hear a "click" sound.



6. Put the soft rubber cap back on.



7. As for removing the SIM card, make sure your medical PC is turned off first of all, too. Use your finger to push the inserted SIM card inward until you hear a "click" sound and then the SIM card will pop up.



2.5 Hand Strap Installation

M1042 comes with a hand strap you can attach to the back panel to make using M1042 easier. When you want to install the hand strap, locate the six holes and fasten the screws onto the unit. After you install the hand strap onto the unit, you can insert the L/R rubber cover back to the hand strap.



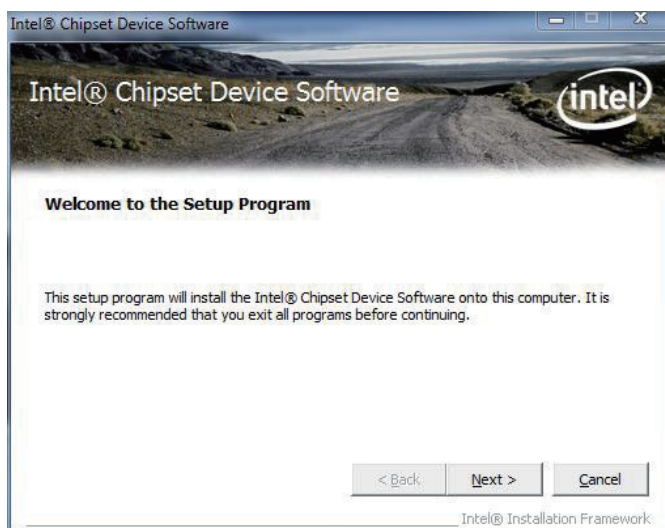
2.6 Driver Installation

Before you install drivers, you must make sure the OS is installed correctly. M1042 only supports Windows 7. Put the disk into CD-ROM drive, and then driver & utility installation main menu will jump out automatically as follows, or you may execute **autorun.exe** manually. Select **Win7 Driver Install**.

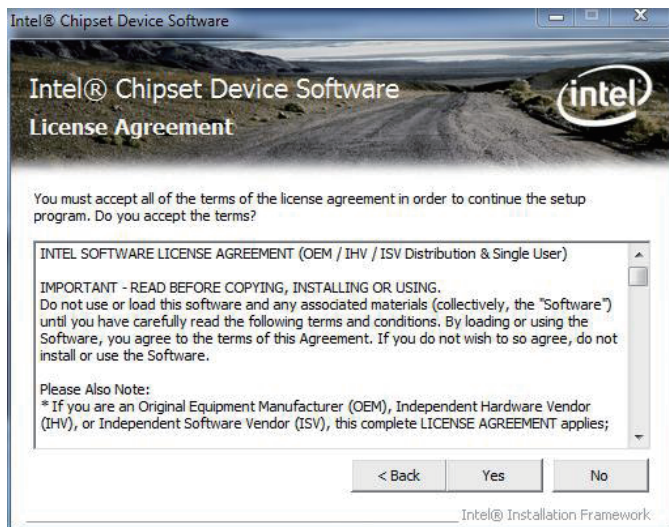


2.6.1 Chipset

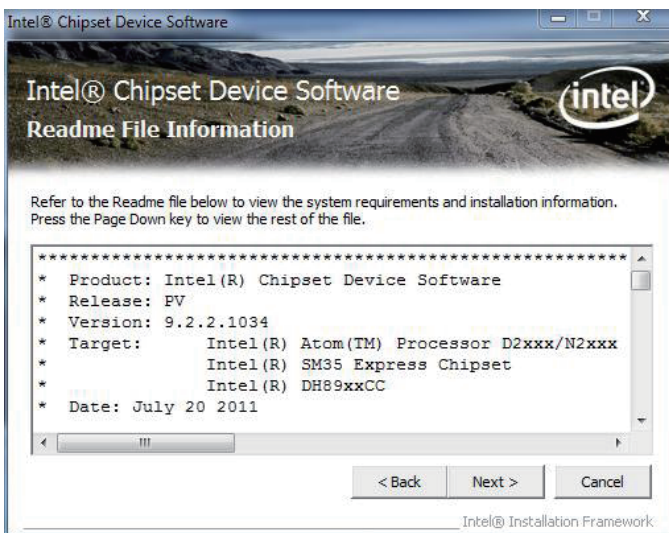
1. Click **Chipset** on the main menu to install chipset driver. Make sure you have closed All Programs which run behind, wait for extraction and then click **Next** to continue.



2. Please read the license agreement first, and click **Yes** to continue.



3. Please read the Readme file for system requirements and installation information, and click **Next** to continue.



4. Click **Finish** to complete the setup process.



2.6.2 VGA Graphics

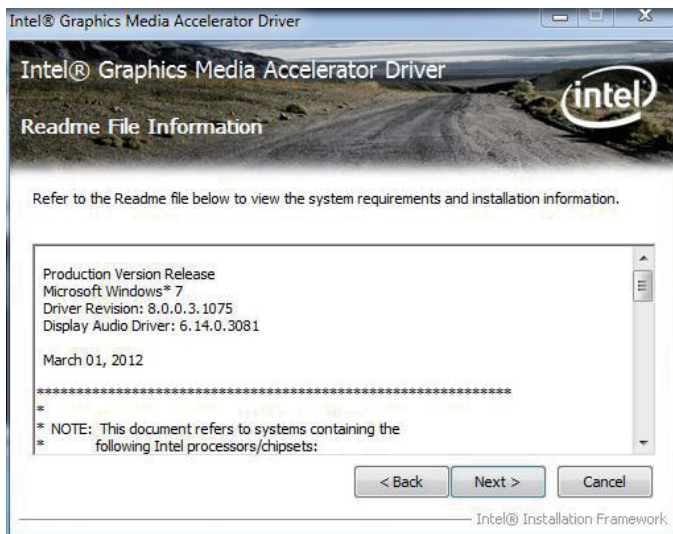
1. Click **VGA** on the main menu to install the device driver. Click **Next** to continue.



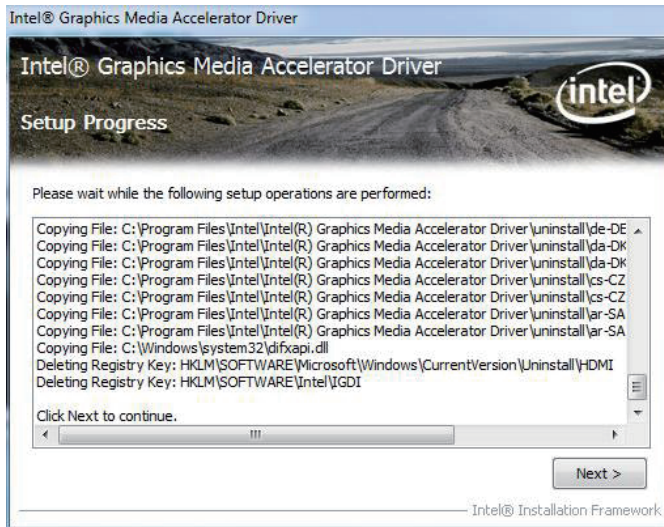
2. Please read the license agreement first, and click **Yes** to continue.



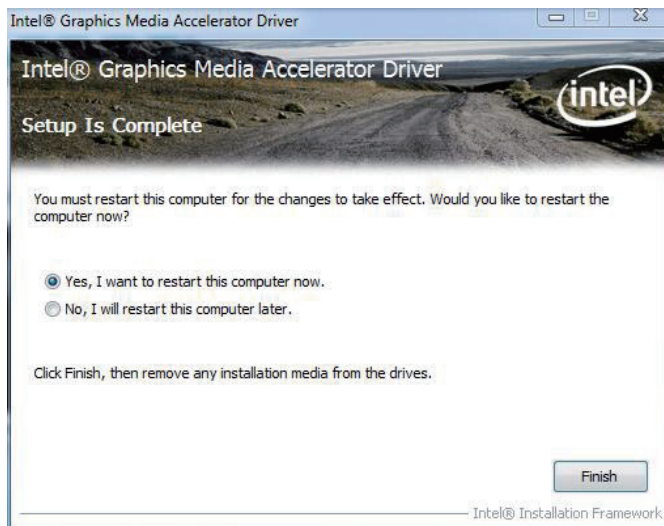
3. Please read the Readme file for system requirements and installation information, and click **Next** to continue.



4. Please wait for setup progress, and click **Next** to continue.

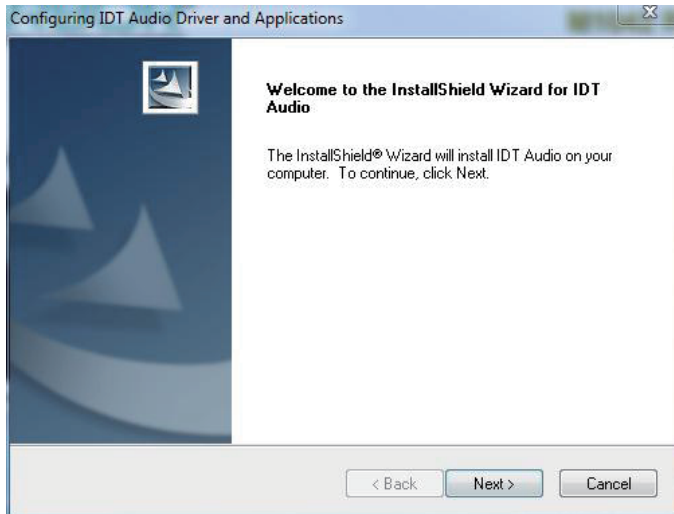


5. After installing the graphics device driver, click **Finish** with **Yes** radio button selected to restart your computer to have the changes take effect, or with **No** to restart this computer later.

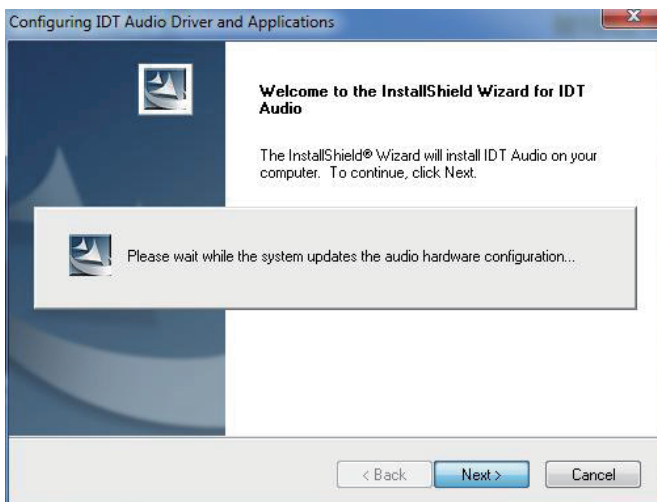


2.6.3 Audio

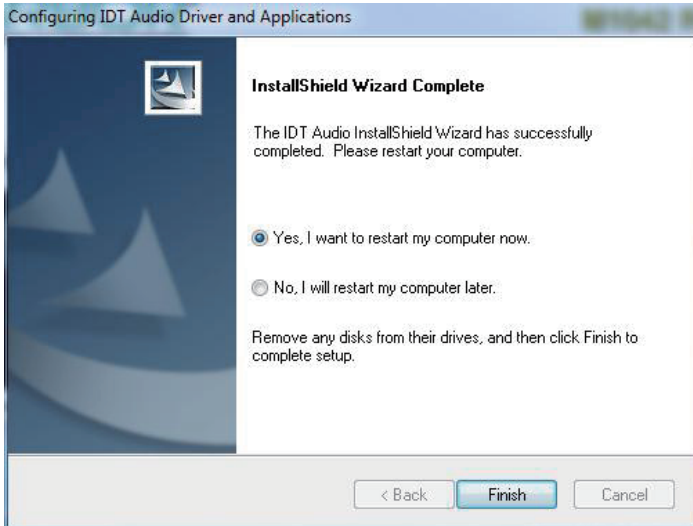
1. Click **Audio** on the main menu to install the audio device driver. Click **Next** to continue.



2. Please wait for a while. Click **Next** to continue.

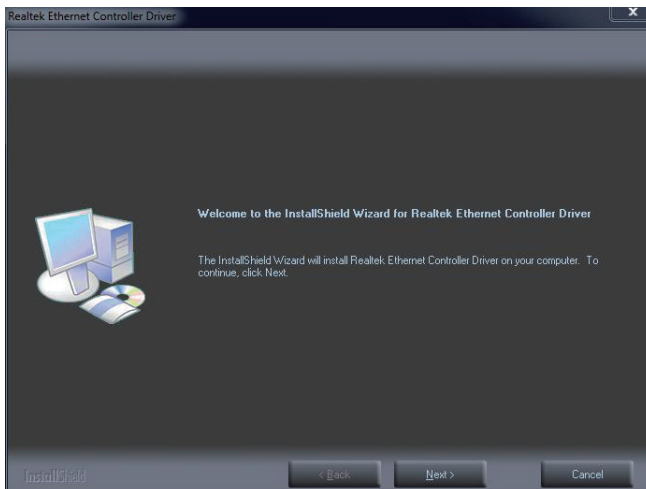


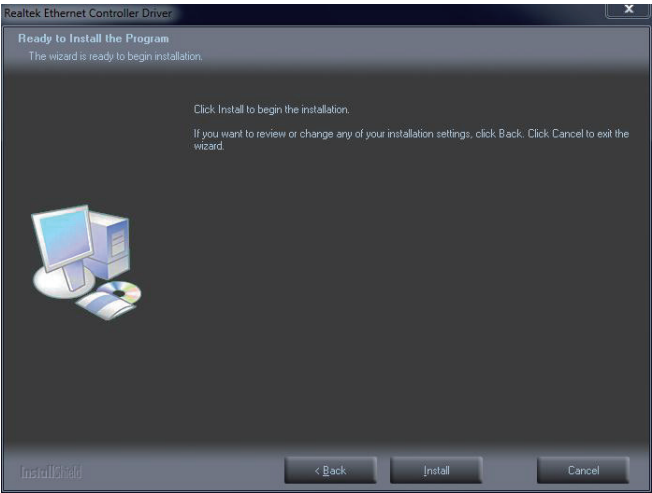
- After installing the audio device driver, you will be asked if you would like to restart the computer. It is required to select “**Yes, I want to restart my computer now.**” in order to make sure the program will run properly. Then, click **Finish** to proceed.



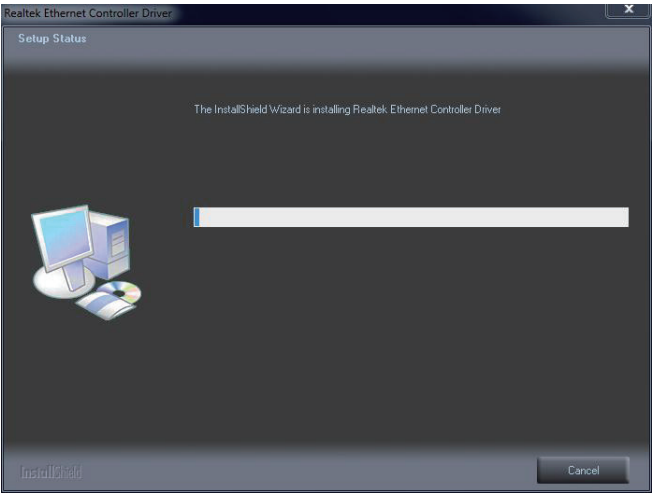
2.6.4 LAN

- Click **LAN** on the main menu to install the LAN device driver. Click **Next** to continue.

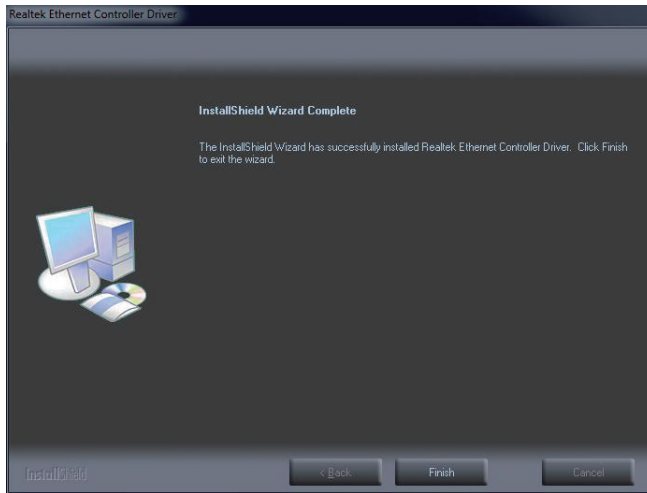




2. Wait for the process.



3. Click **Finish** to end installation.



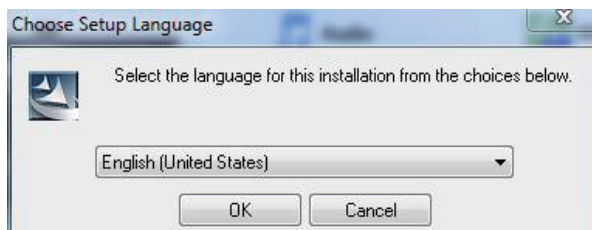
2.6.5 WiFi

Click **WiFi** on the main menu to install the device driver. Wait for installation until logo below disappears.

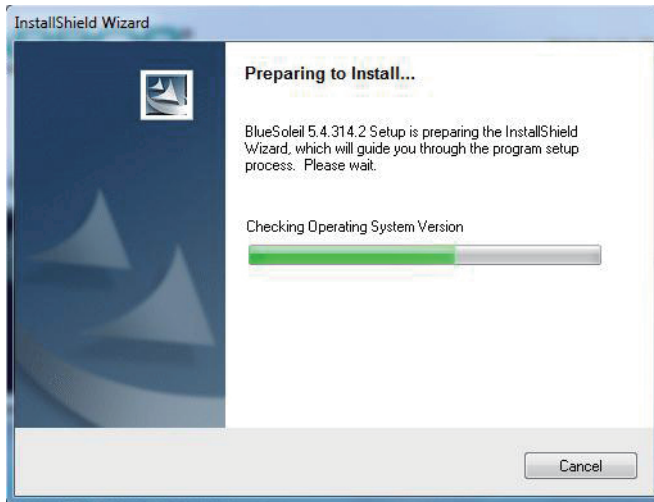


2.6.6 Bluetooth

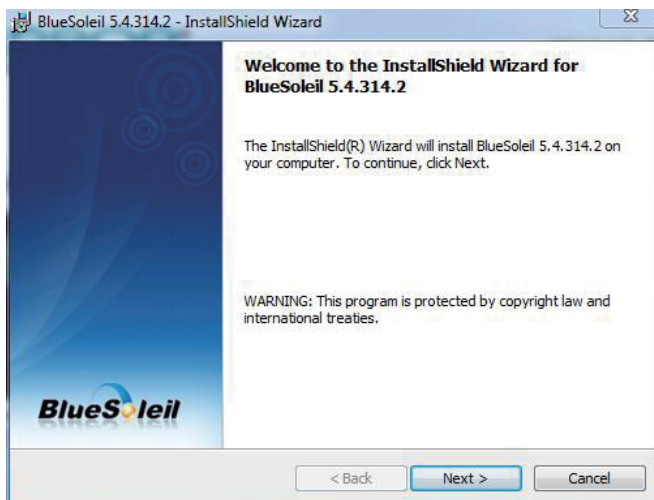
1. Click **Bluetooth** on the main menu to install the Bluetooth device driver. Select your preferred language.



2. Wait for the process.



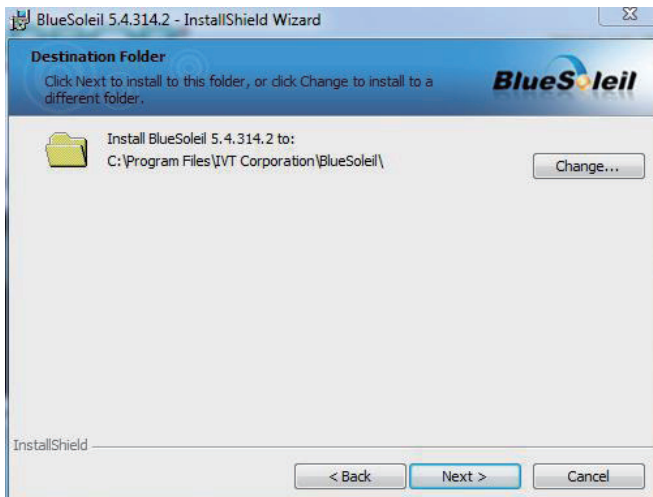
3. Click **Next** to continue.



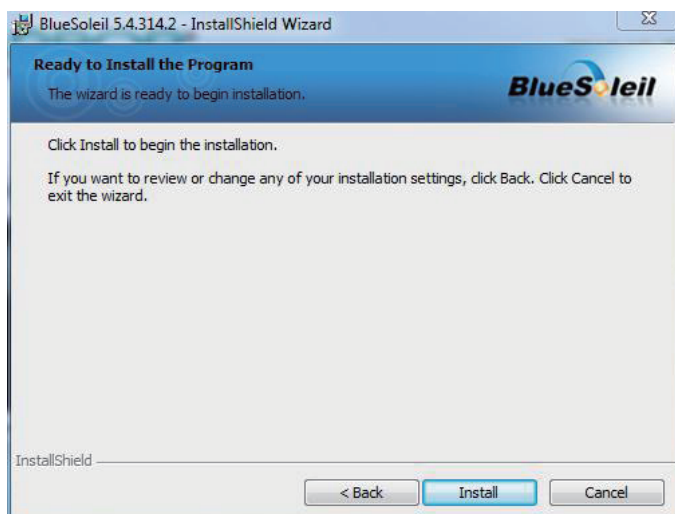
4. Read the license agreement first; select ***I accept the terms in the license agreement*** and then click ***Next*** to continue.



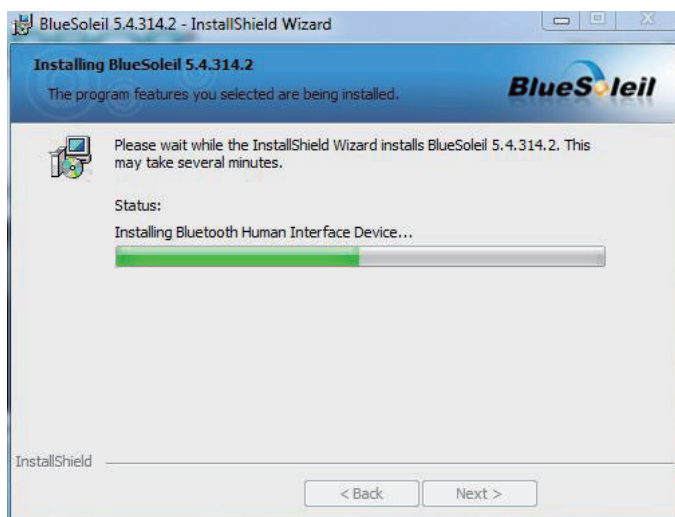
5. Click ***Next*** to install to this folder, or click ***Change*** to install to a different folder.



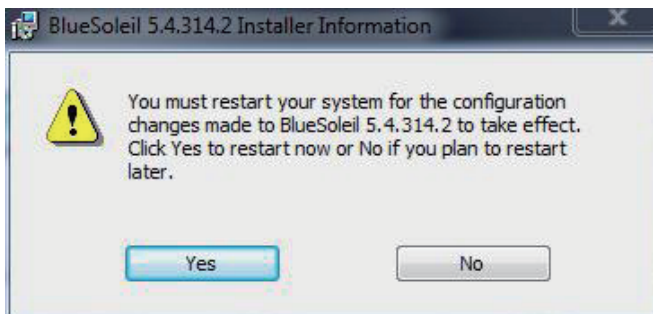
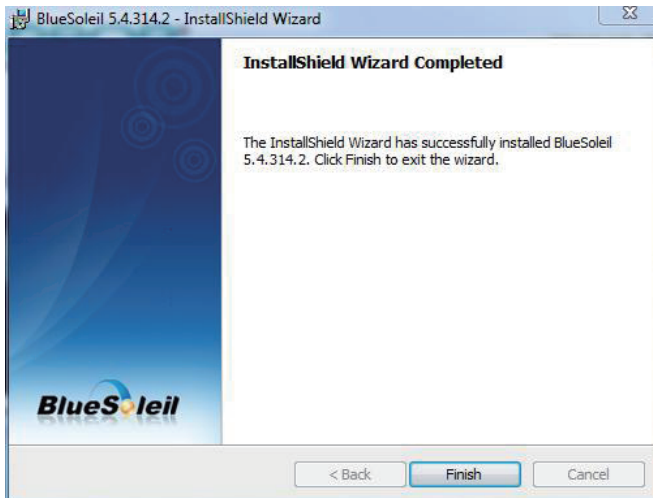
6. Click **Install** to start installation.



7. Wait for seconds.

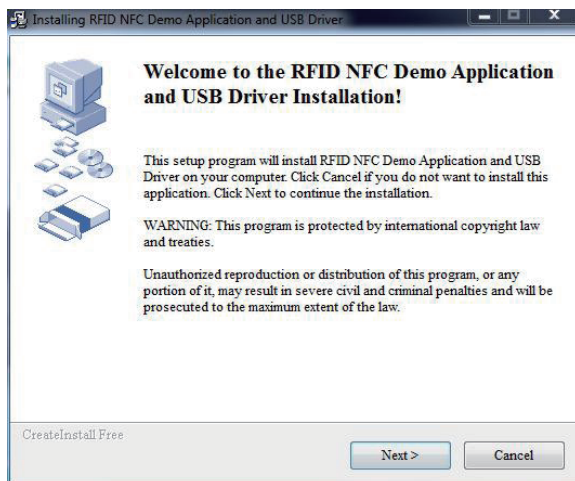


8. After the installation is completed, click **Finish** to close the window. And then a message box shows up asking whether you want to restart the computer right away or later.

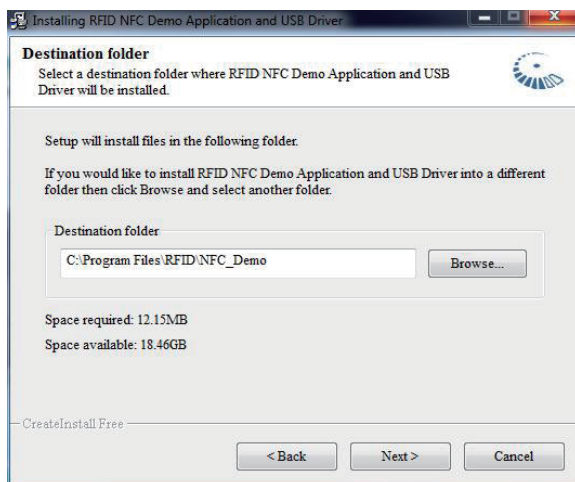


2.6.7 RFID (optional)

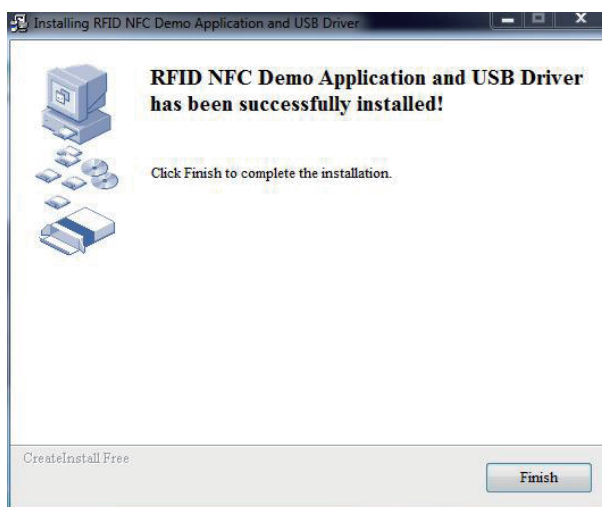
1. Click **RFID** on the main menu to install the RFID application. “AP” letters on its icon imply this is an application instead of driver. The same principle applies to **Docking Station** as well. Read the information and then click **Next** to continue.



2. Click **Next** to install to default folder, or click **Browse** to install to a different folder.

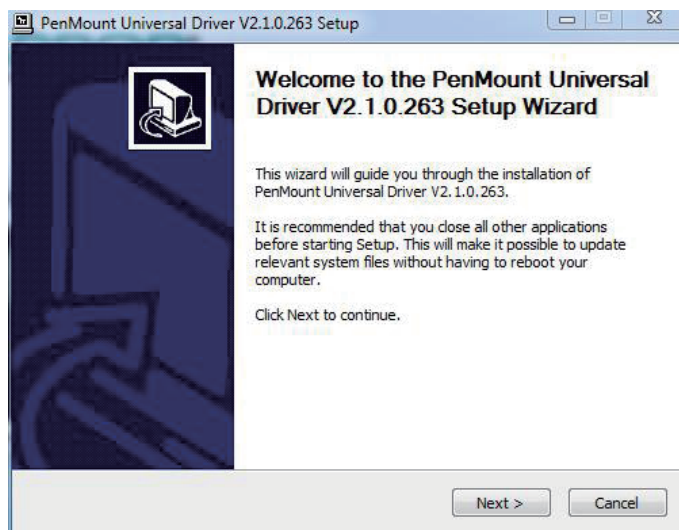


3. Click **Finish** to close the window.

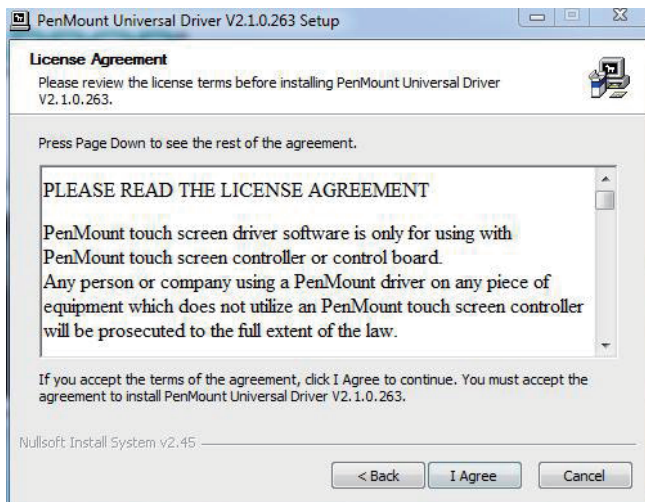


2.6.8 Touch Screen

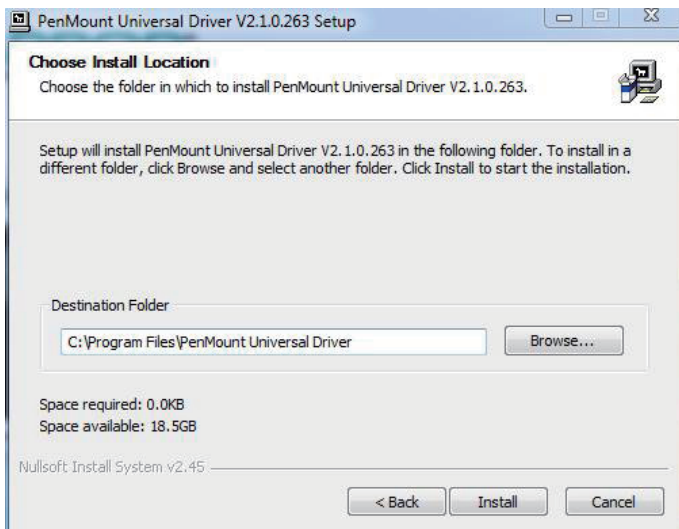
1. Click **Touch Screen** on the main menu to install the driver for touch screen. Click **Next** to continue.



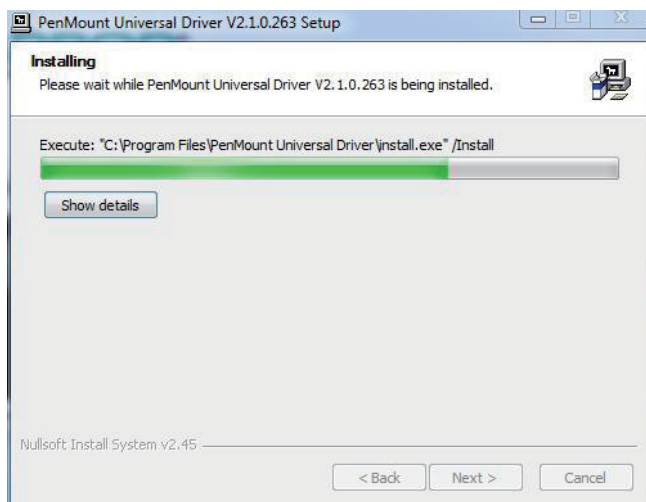
2. Read **License Agreement** and then click **I Agree** to continue.



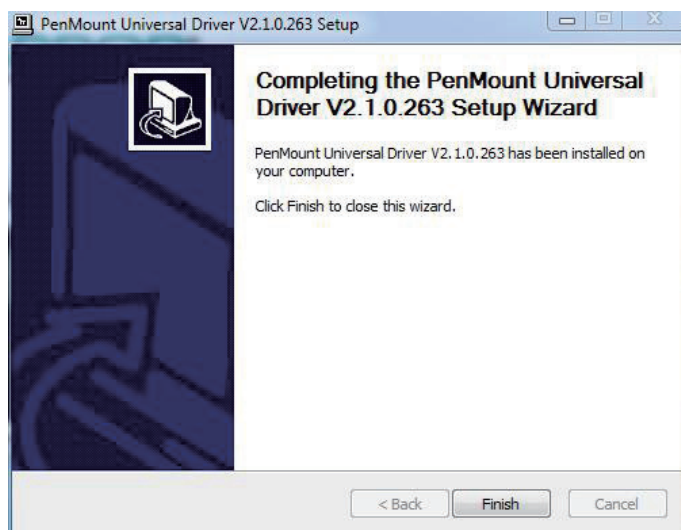
3. Click Browse to choose installation location, or maintain the same setting by clicking **Install** directly.



4. Wait for the process.

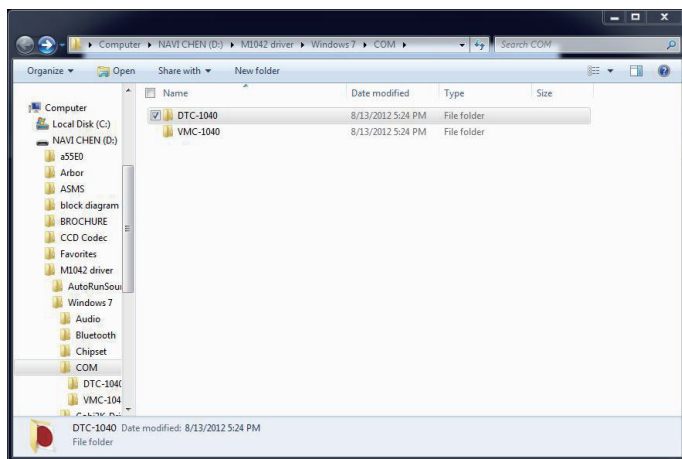


5. After installation is completed, click **Finish** to close this window.

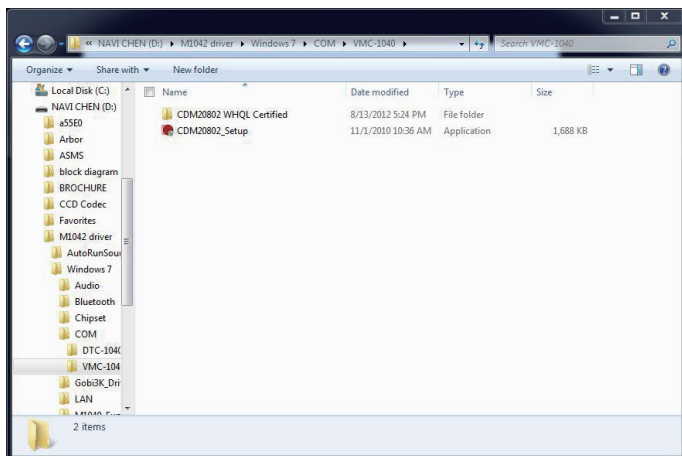


2.6.9 Docking Station (optional)

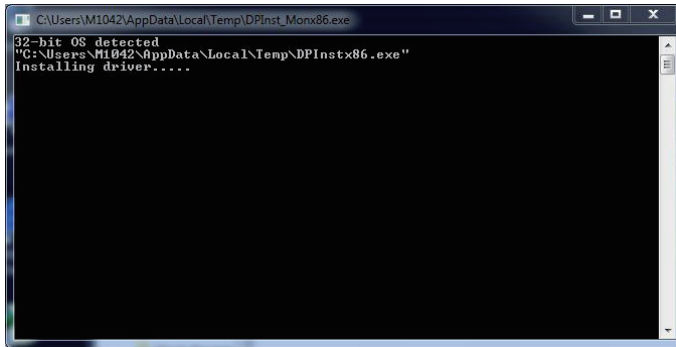
1. Click **Docking Station** on the main menu to install the driver for docking station. After that, a window containing two folders will jump out immediately. Choose the optional gadget you want to install. In this case, we take VMC-1040 for example, which is the RAM-ball mount docking station you can find in Optional Accessories (see Section 1.3). We suggest you mount the tablet PC on its docking station (DTC-1040 or VMC-1040) before continue to step 2. See appendix for how to mount.



2. Click **COM20802_setup.exe** to continue.



- Wait for seconds until the window below disappears.

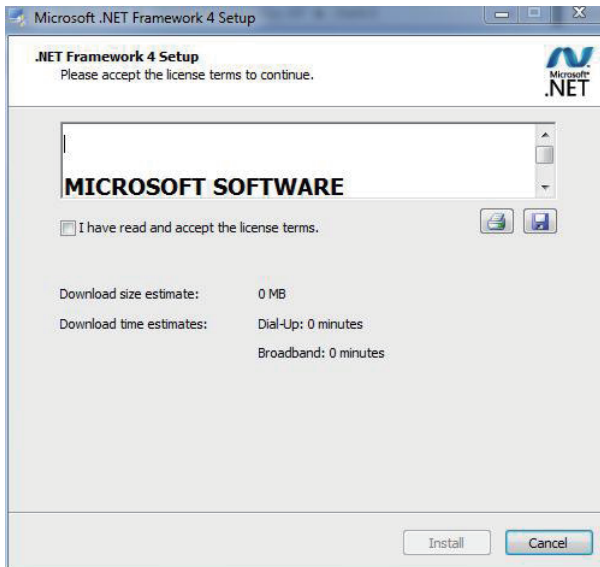


2.6.10 Function Keys

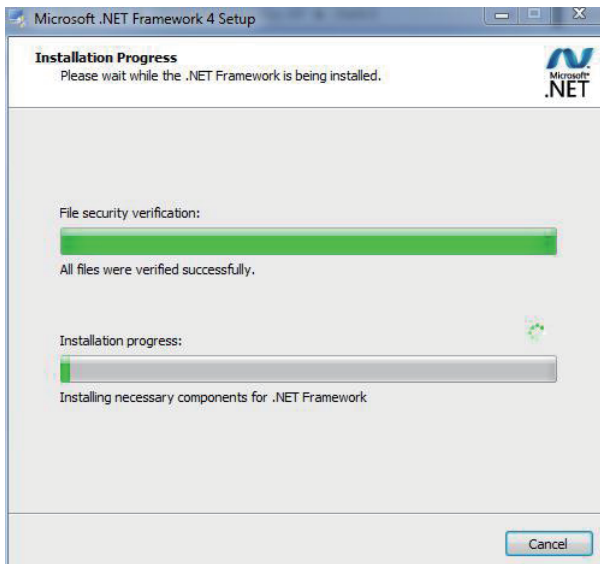
- Before installing **Function Keys**, you should install **Microsoft .NET 4.0** first, or your program may not function normally. Execute **Microsoft .NET 4.0** on main menu. Wait for extracting files.



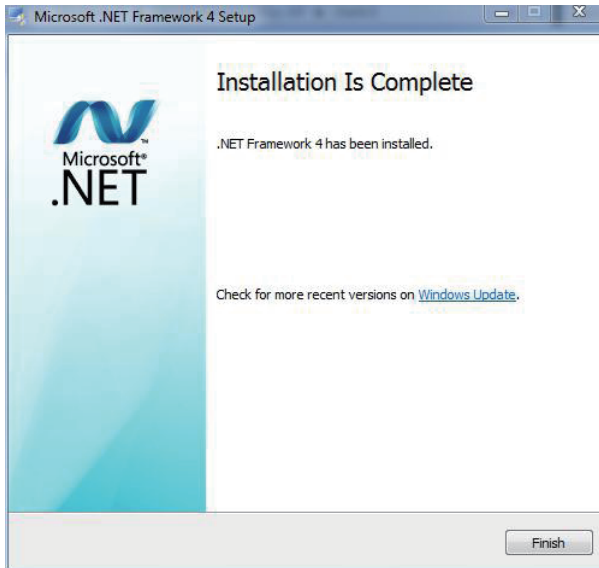
2. Read license terms, check “***I have read and accept the license terms.***” and then click ***Install.***



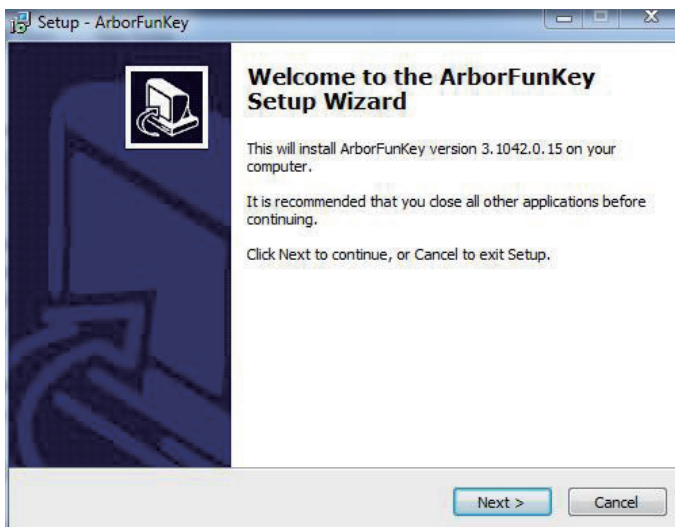
3. Wait for installation progress.



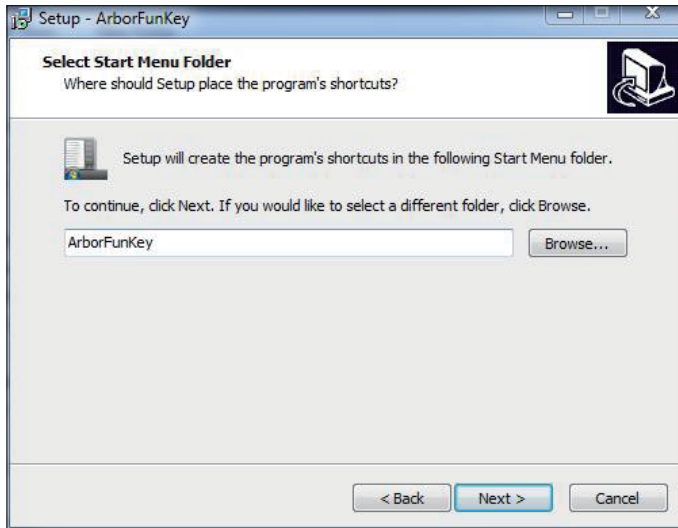
4. Click **Finish** to close the window.



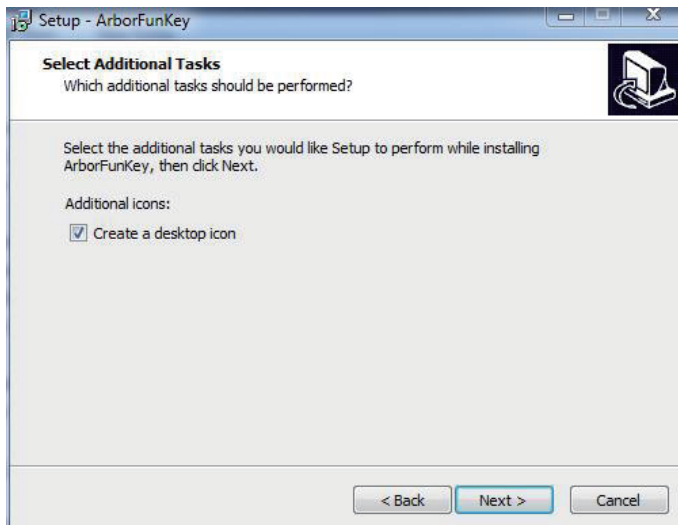
5. Now, back to the beginning, execute **Function keys** on main menu. Click **Next** to continue as below window pops up.

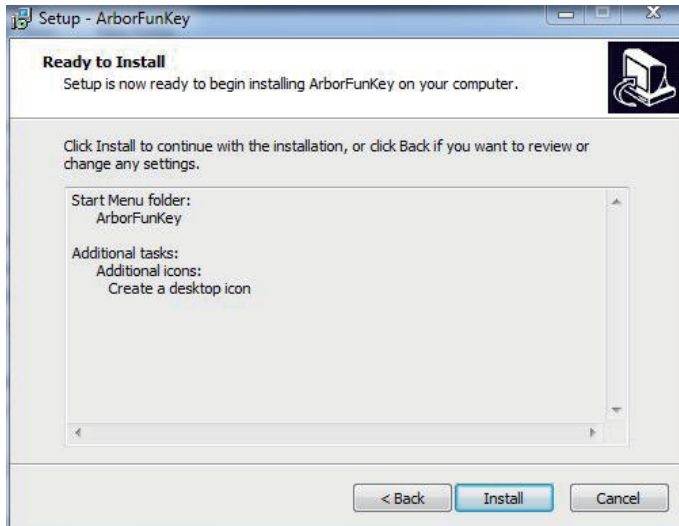


6. Set destination folder and click **Next**.

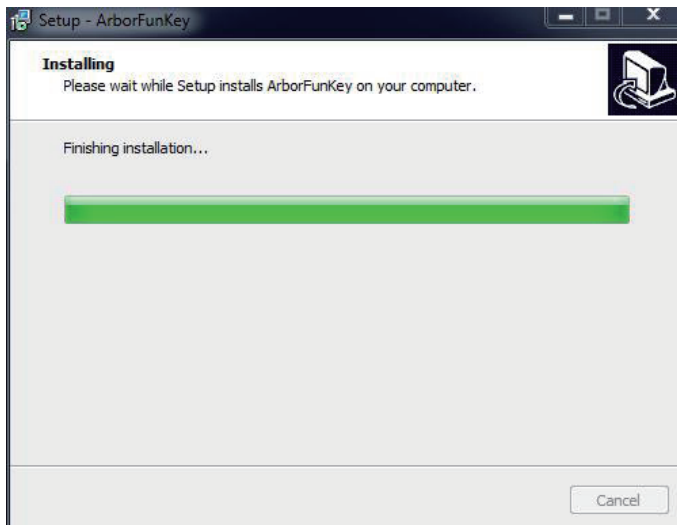


7. Check the box to create desktop icon and click **Next**.

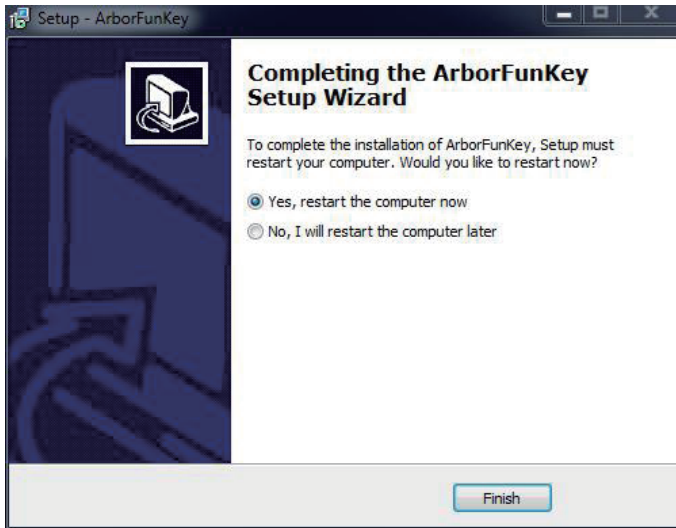


8. Click **Install**.

9. Wait for the process.

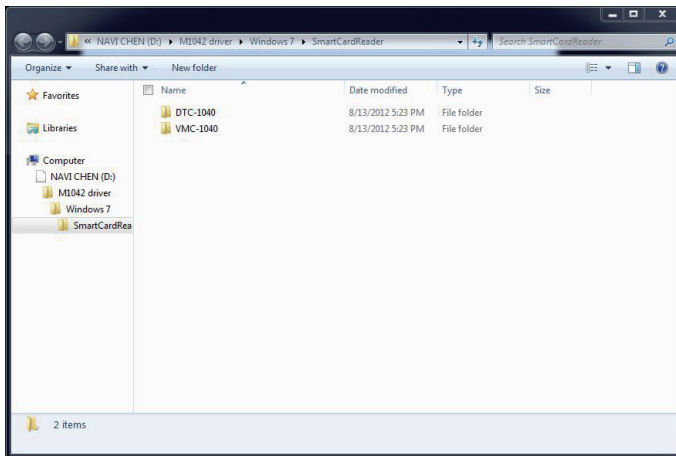


10. Choose **Yes** and click **Finish** to reboot computer.

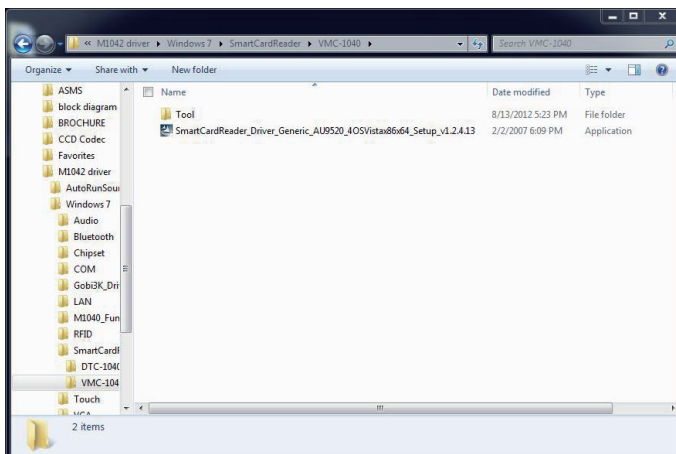


2.6.11 Smart Card (optional)

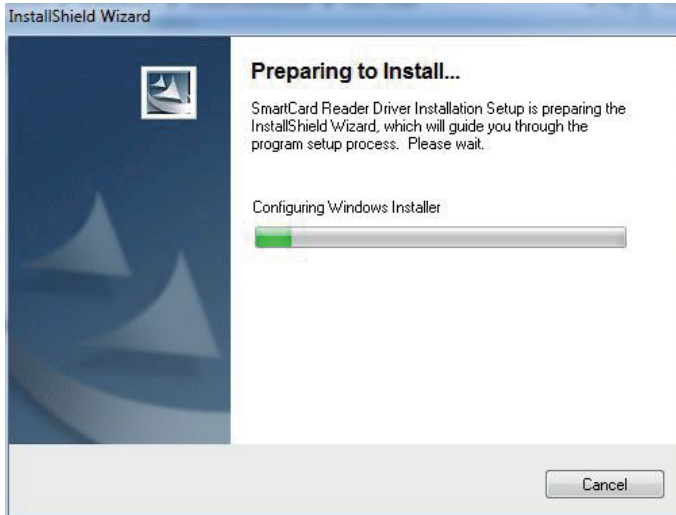
1. Click **Smart Card** on the main menu to install the driver for smart card. After that, a window containing two folders will jump out immediately. Choose the optional gadget you want to install. Both DTC-1040 and VMC-1040 have smart card reader. In this case, we take VMC-1040 for example, which is the RAM-ball mount docking station you can find in Optional Accessories (see Section 1.3). We suggest you mount the tablet PC on its docking station (DTC-1040 or VMC-1040) before continue to step 2. See appendix for how to mount. Besides, SMR-1040 in Section 1.3 is also a smart card reader you can purchase.



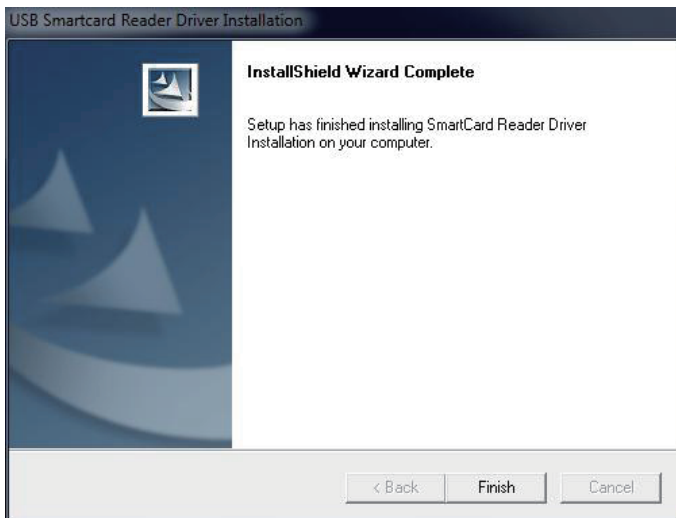
2. Execute .exe file under the folder.



3. Wait for seconds.

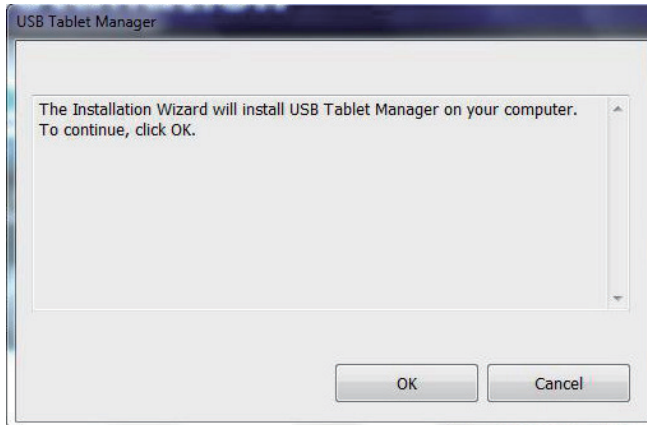


4. Click **Finish** to close the window.

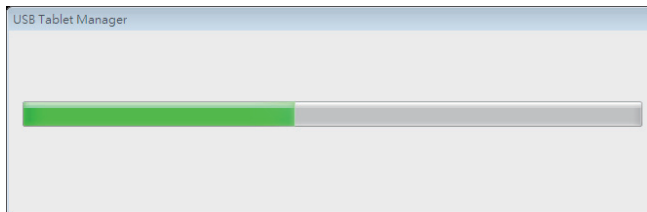


2.6.12 Digitizer (only for M1042R)

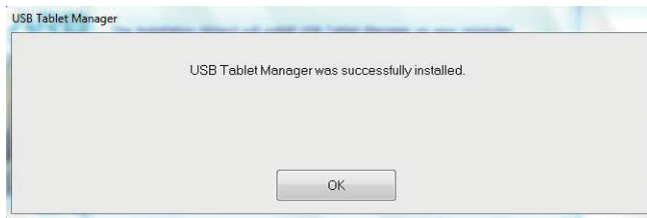
1. Click **Digitizer** on the main menu to install the Digitizer driver. Click **OK** to continue as the below window pops up.



2. Wait for the process.



3. The USB Tablet Manager was successfully installed. Click **OK** to close the window.



2.6.13 3G Driver Installation (optional)

Click **3G** of the main menu to install the device driver. Click **Next** and the program will do the rest.

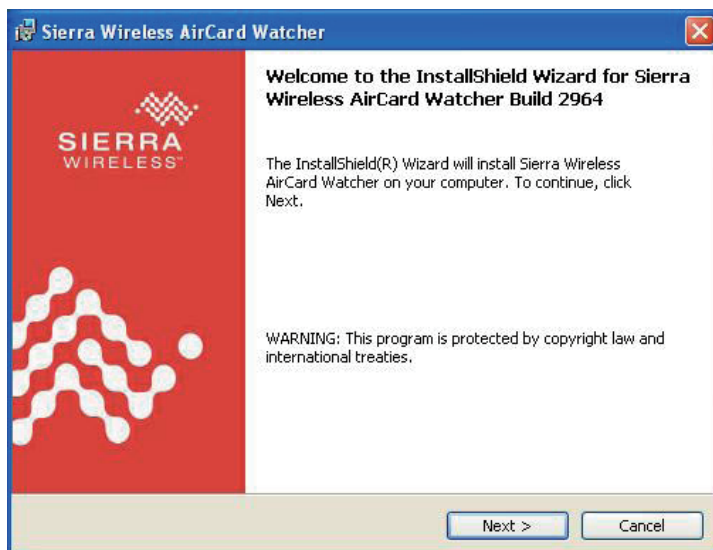


2.6.14 3G AP Installation (optional)

1. Click **3G AP** on the main menu to install the application. Read the information and click **Next**.



2. Read warning and click **Next**.



3. Choose "**I accept the terms in the license agreement**" and press **Next**. Click **Change...** to designate another installation folder if you like.



4. Wait for the installation.



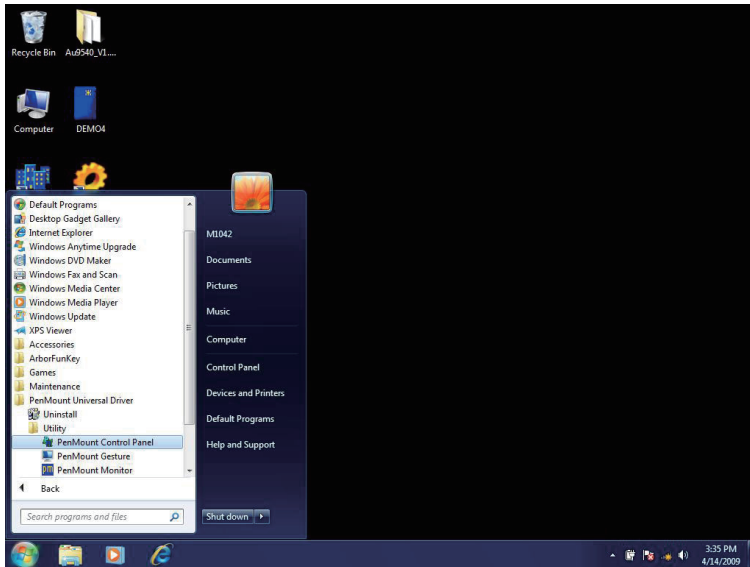
5. Click **Finish** to complete the installation.



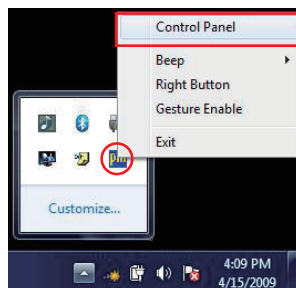
2.7 Basic Operation

2.7.1 Touch Screen Calibration

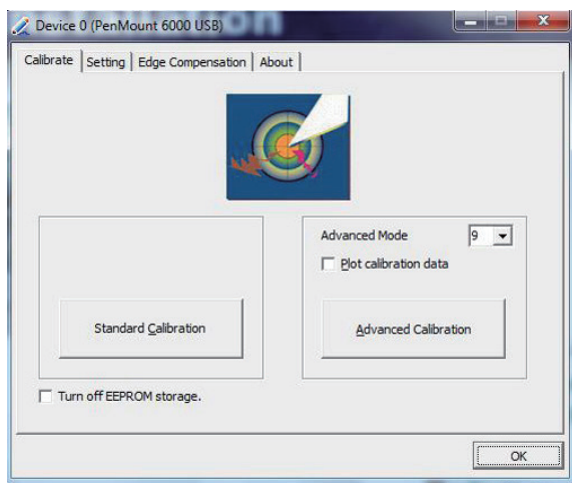
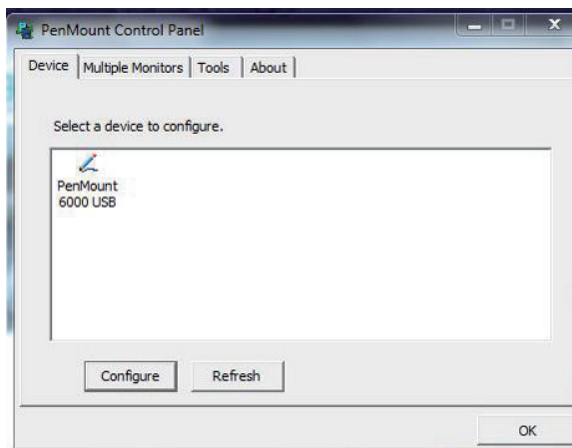
1. After installing **Touch Screen** driver, a set of shortcuts will be generated in **All Programs**.

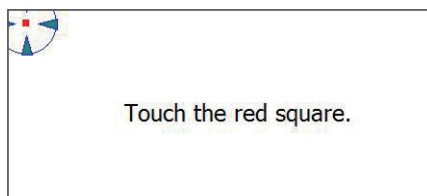


2. Before the touchscreen can work accurately, calibration is needed. Whenever users feel lost in accuracy, they can do calibration again to adjust the accuracy for proper functioning. Execute **PenMount Monitor** in **All Programs** to generate its shortcut in system tray. Single click the icon to unfold sub-menu. Execute **Control Panel** from the sub-menu or **PenMount Control Panel** in **All Programs** to call the same window.



3. Press **Configure** button and then choose **Standard Calibration** or **Advanced Calibration**. The whole screen will become white and a red square rounded by a blue circle with arrows shows up. Meanwhile, the countdown starts from Second 12 right away.

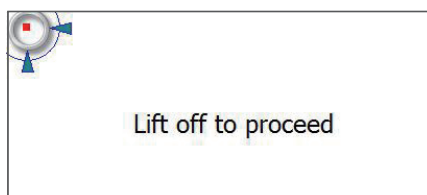




Touch the Red Square



Hold

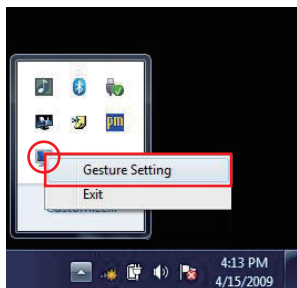


The Calibration of Individual Point Finished

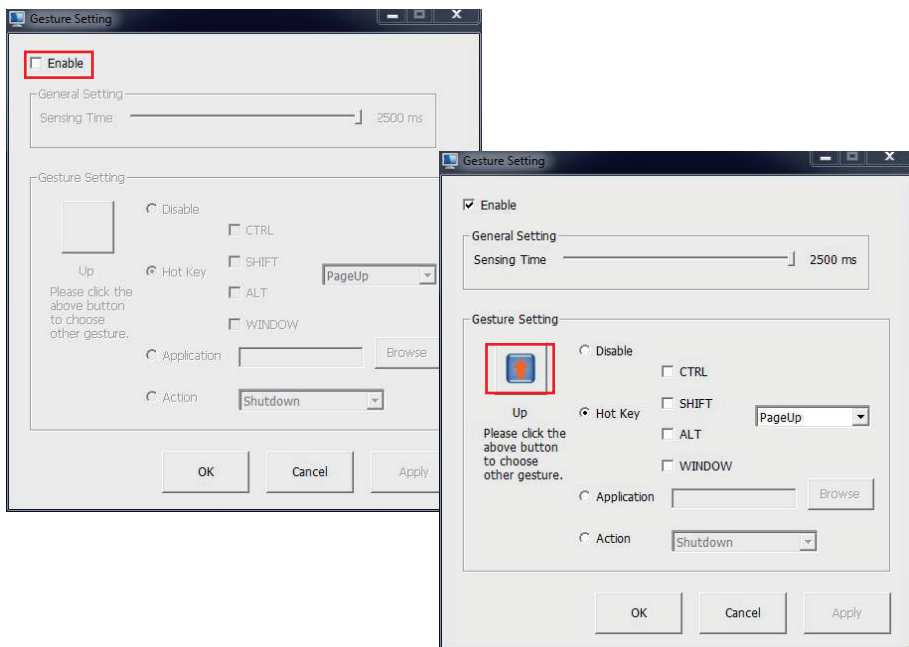
4. Use your digitizer to touch the red square and rest on it until a line “**Lift off to proceed**” shows up. Repeat the step until you finish calibration. If there is no action taken within 12 seconds, calibration task will be aborted automatically.

2.7.2 Gesture Setting

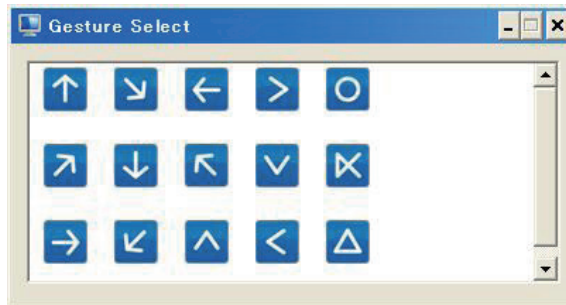
1. Touchscreen function of this medical tablet allows you to set hot key or do other settings. Open up **PenMount Gesture** under **All Programs** to generate its shortcut in system tray. Single click the icon to unfold sub-menu and execute **Gesture Setting**.



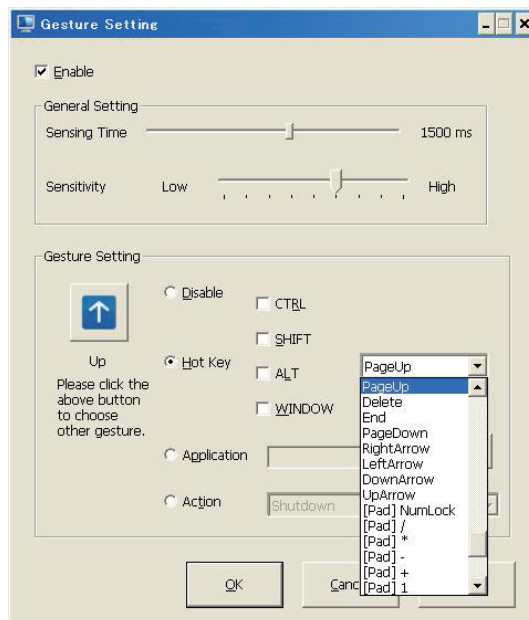
2. The **Gesture Setting** window will jump out right away. Check **Enable** and click the upward arrow.



3. And then another **Gesture Select** window will pop up. Each mark in this menu represents your gesture on screen. For example, the upward arrow indicates that you move your finger from bottom to top across the touch screen. The rest are similar. You may use your gesture applied on the touchscreen to do further configuration. Select a gesture you would like to define.

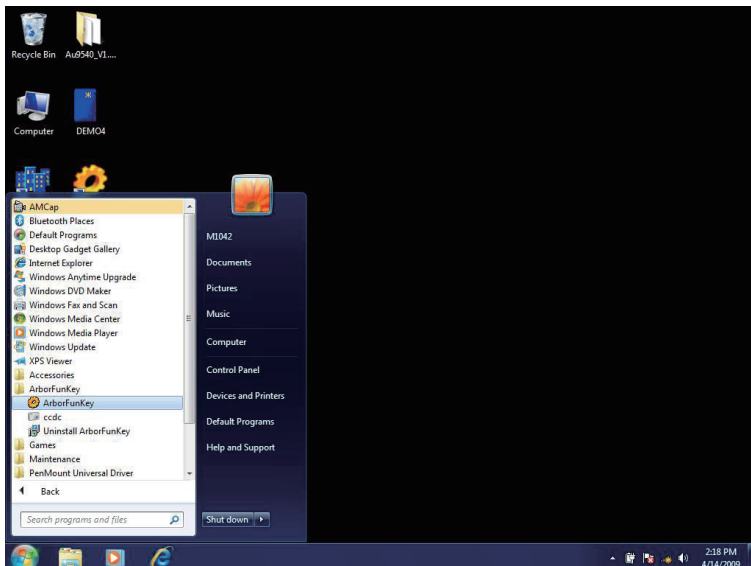
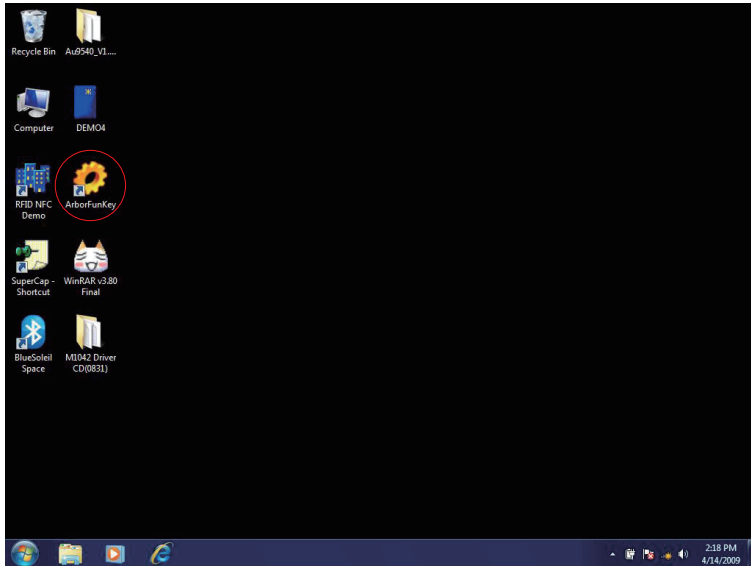


4. Then again, choose **Hot Key**, **Action** or **Application** to set each gesture's corresponding function. You may disable it, too. And remember to press **Apply** after all.



2.7.3 Function Key Configuration

1. After installing function key driver successfully, **ArborFunkey** icon will appear on desktop. You may also execute it from **All Programs**.



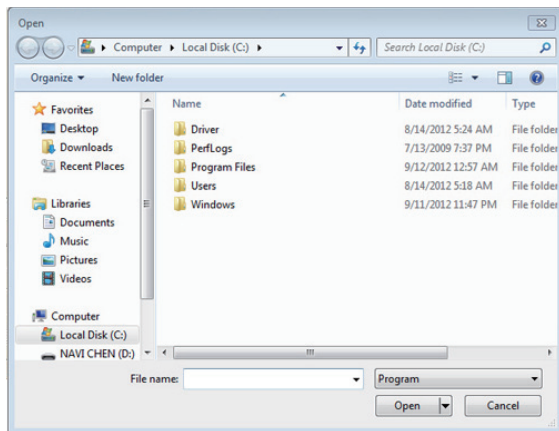
2. Click the icon with only one tap to open up the following window.



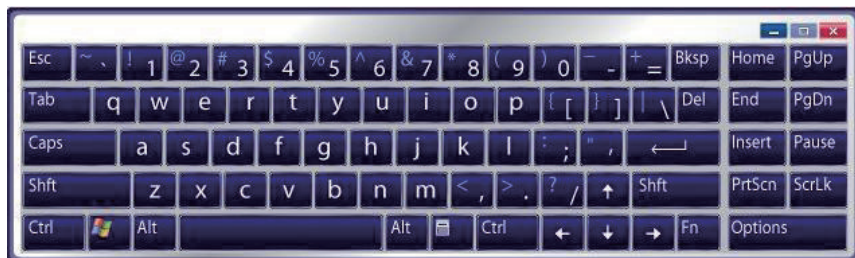
turn blue when these devices are on

3. You can change default functions for F1-F4 keys on front panel. From left to right, their individual meaning is listed below.

1	3G (optional) On/Off
2	WiFi On/Off
3	Bluetooth On/Off
4	*RFID (optional) On/Off
5	Adjust Volume
6	Camera On/Off (See Section 2.7.5)
7	Adjust Brightness
8	Switch User
9	Battery & WiFi Status On/Off
10	Turn On/Off Arbor System Suite Program
11	*On-screen Keyboard On/Off
12	User-defined. This is used for setting hotkey of designate .exe, .com, .bat or .cmd file. Set this button as function key and press it; then, the following window will pop up immediately. Choose your preferred file type and file location.



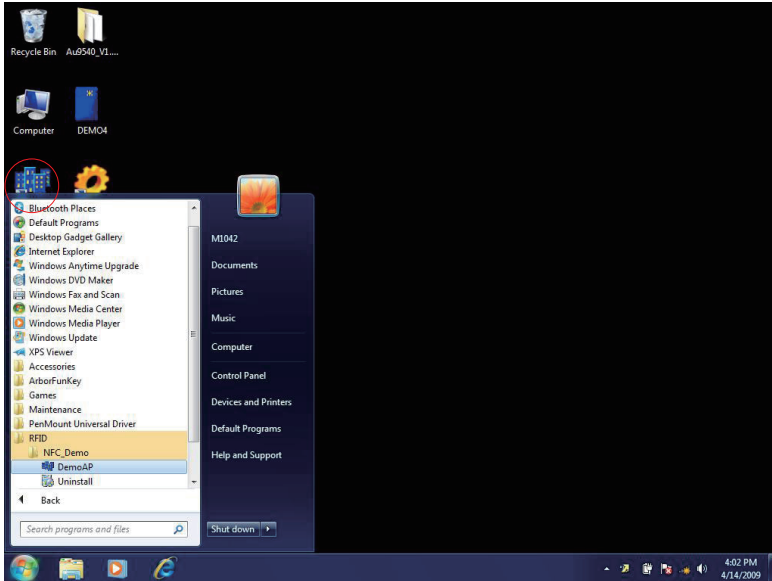
*Note: You may also press one of the buttons on top side to turn on/off RFID directly (See Section 2.1.1). Currently, barcode function is not included in Arbor System Suite this program, so you can only press another button also on top side to trigger barcode scanner.



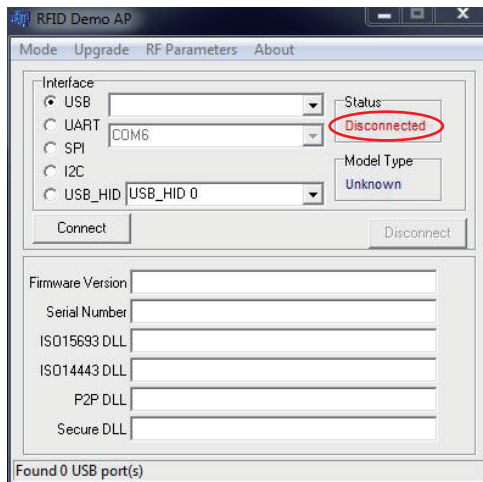
*On-screen Keyboard

2.7.4 RFID (optional)

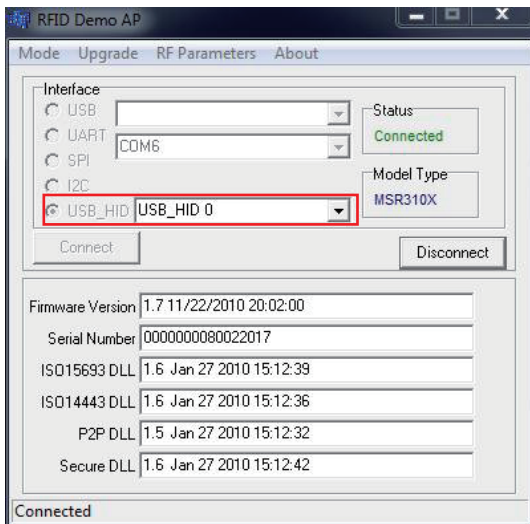
1. Once you've installed RFID driver properly, a software named **DemoAP** will appear in **All Programs**. This is a test program. You may install your own RFID program, too. But now, we want to introduce how to test your RFID function, so just open up this software from All Programs or shortcut on desktop.



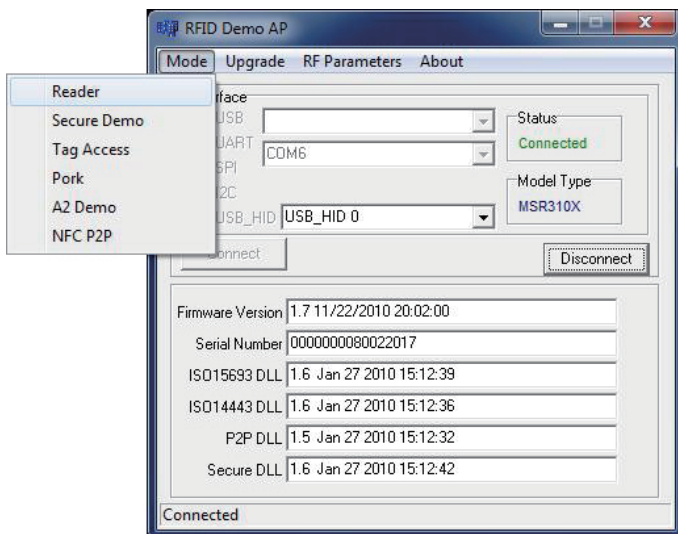
2. In the beginning, the **Status** column reveals **Disconnected**.



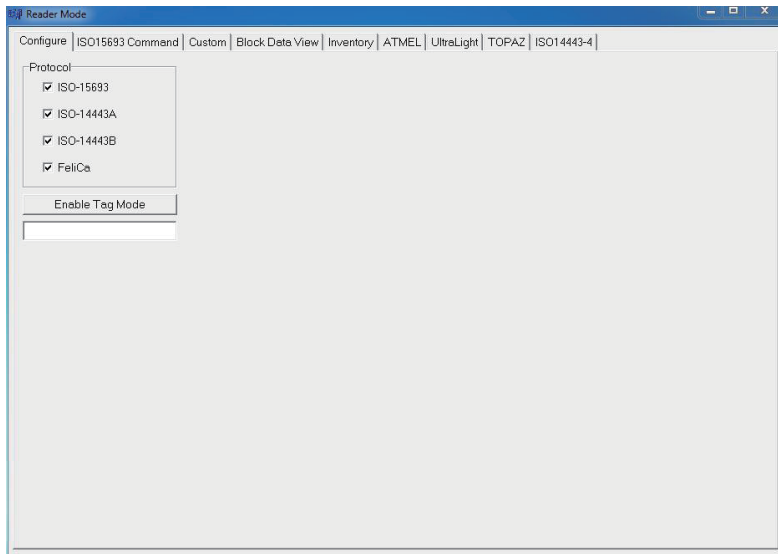
3. Turn on RFID by pressing RFID button on top side (see Section 2.1.1 for its location) or one of the four function keys already set as RFID On/Off (see Section 2.7.3). Select **USB_HID** as below, and then, **Status** will become **Connected**, meaning your RFID is working.



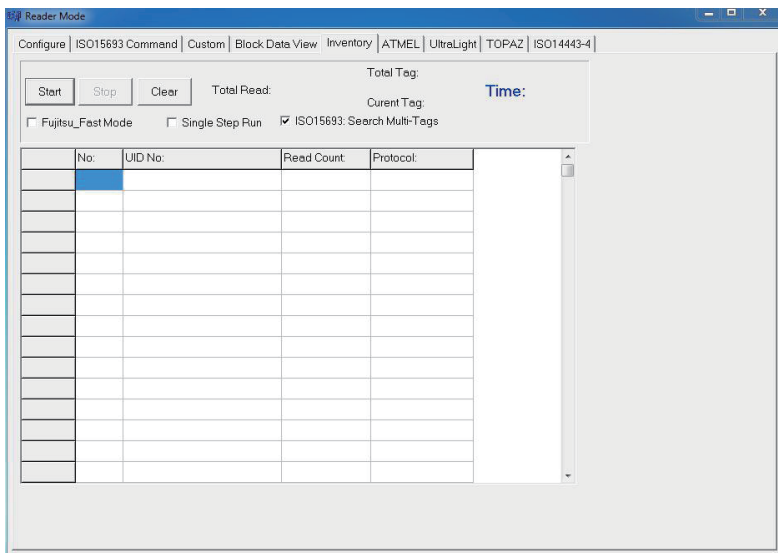
4. To demo test the RFID, please go to **Mode > Reader**.



5. *Reader Mode.*



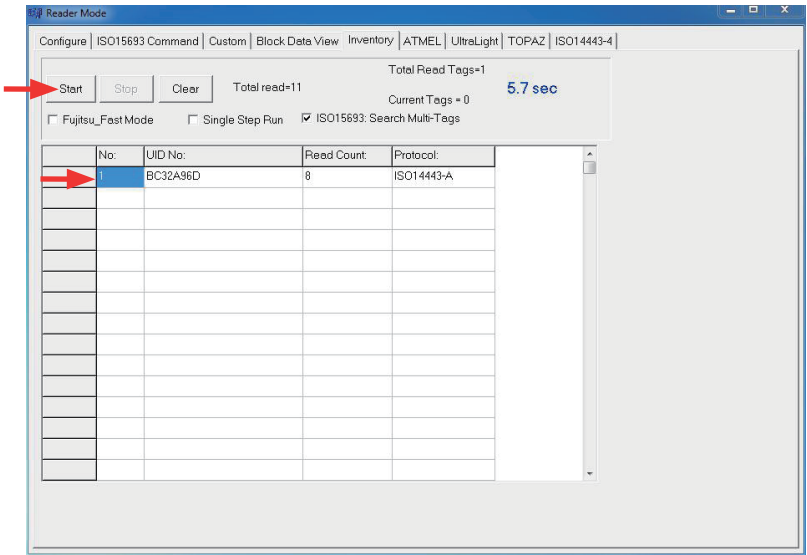
6. Select **Inventory** on the top menu bar.



7. You may use a RFID tag to do the demo test.

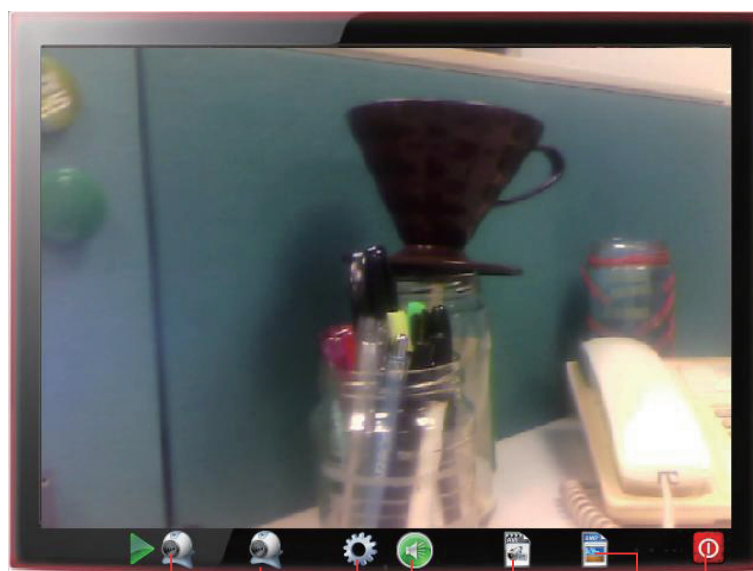
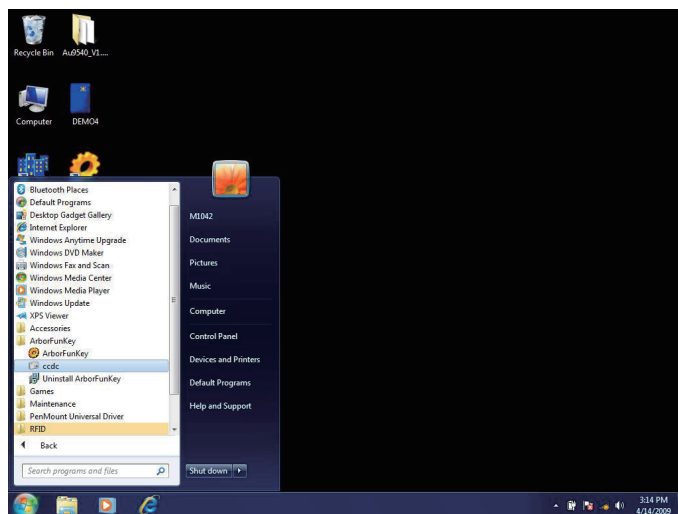


8. Then, click **Start**. Information, like **UID No**, **Read Count**, **Protocol** will be listed in the inventory, plus second number on the right side.



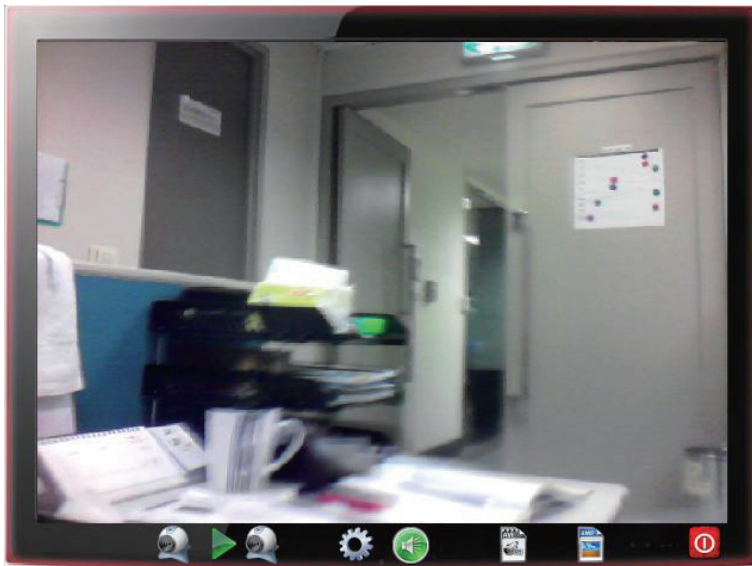
2.7.5 Camera

1. After installing function key driver successfully, **ccdc** icon will appear in **All Programs**. Execute the camera program. You may also open it by Function Key. (See Section 2.7.3) Set one of the four function keys as Camera On/Off.

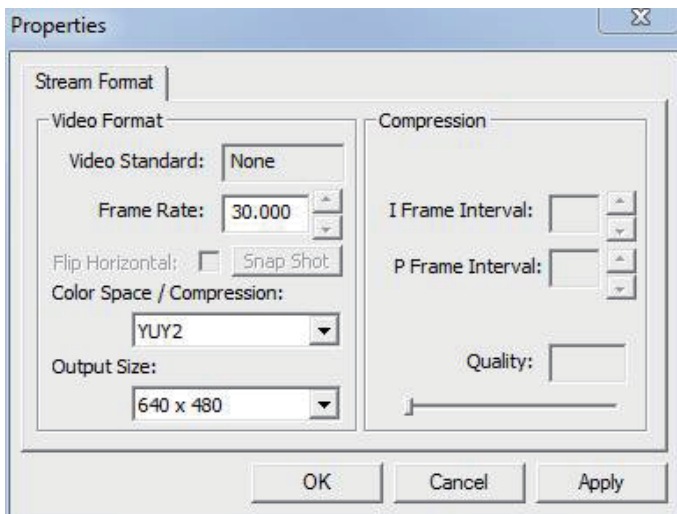


Rear Camera Front Camera Set Format Mute Record Film
Take Picture Close

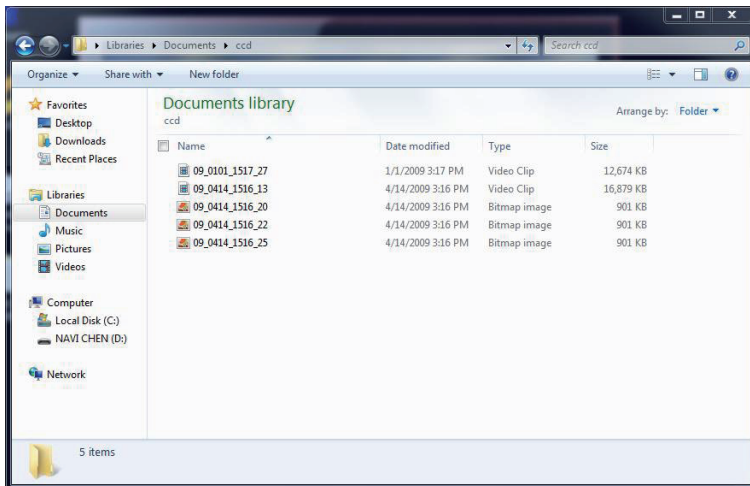
2. Press **Rear** or **Front Camera** icon to switch between cameras.



3. Press **Set Format** to set further video format.



4. Press **Record Film** or **Take Picture** icon to execute these works. Files are saved under **ccd** folder in **Documents**.



2.7.6 BarCode Scanner

Put a test barcode under scanner as below, open a "Text" file to test detected information, and press barcode trigger on top side to input information contained in barcode into .txt file.

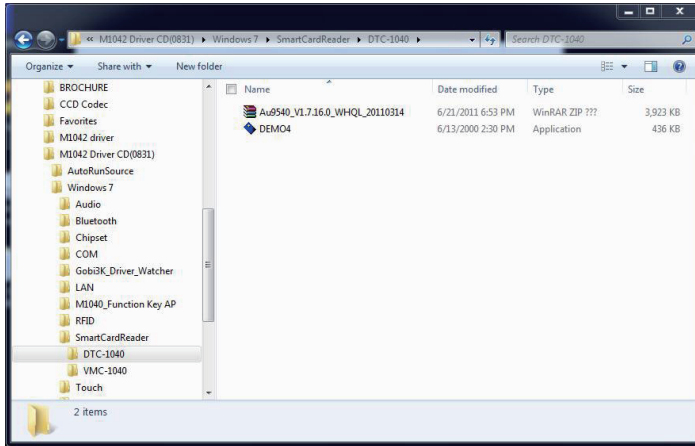


Note: As following table, M1042 supports these 1D and 2D barcodes.

Linear	Matrix
BC412 (requires end-user license from IBM)	Aztec
China Post	Chinese Sensible Code (Han Xin Code)
Codabar (NW7)	Data Matrix
Code 11	Grid Matrix Code
Code 128	MaxiCode
Code 32	QR Code
Code 39	Micro QR Code
Code 93 and 93i	Postal
Code 2 of 5	Intelligent Mail Barcode
EAN	(formerly 4-state customer barcode)
Interleaved 2 of 5	Australian Post
Label Code	British Post
Matrix 2 of 5	Canadian Post
MSI	ID-tag (UPU 4-state)
Plessey	Japanese Post
PosiCode	Netherlands (KIX) Post
GS1 DataBar (formerly RSS)	Korea Post
Telepen	Planet Code
Trioptic Code	Postnet
UPC	OCR
Stacked	OCR-A
Codablock F	OCR-B
Code 16K	OCR MICR (E 13 B)
Code 49	
GS1 Composite (formerly EAN/UCC)	
MicroPDF417	
PDF417	
TCIF Linked Code 39 (TLC39)	

2.7.7 Smart Card Reader (optional)

1. You may install your own Smart Card Reader application; however, our driver CD incorporates a program to test this device. Please execute DEMO4.exe from the following path: disk drive\Windows 7\SmartCardReader\DTC-1040



2. Insert a smart card into its reader on VMC-1040, DTC-1040 or SMR-1040. Make sure chip face directs upwards. (see Appendix for how to install VMC-1040 or DTC-1040)

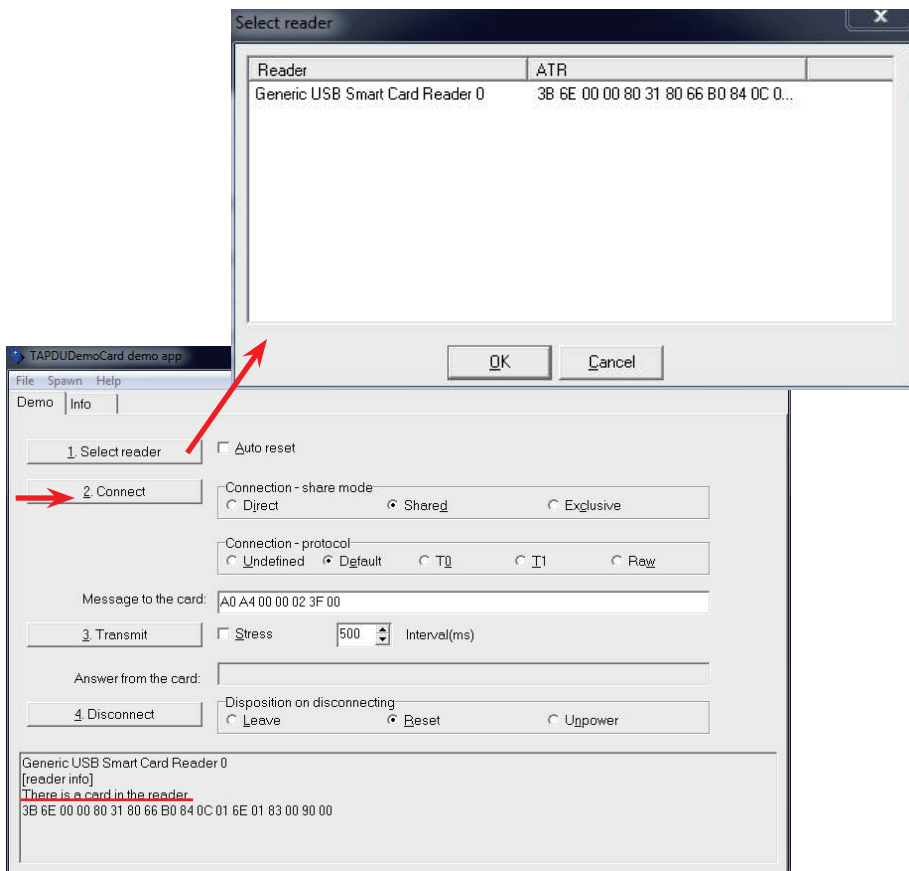


VMC-1040



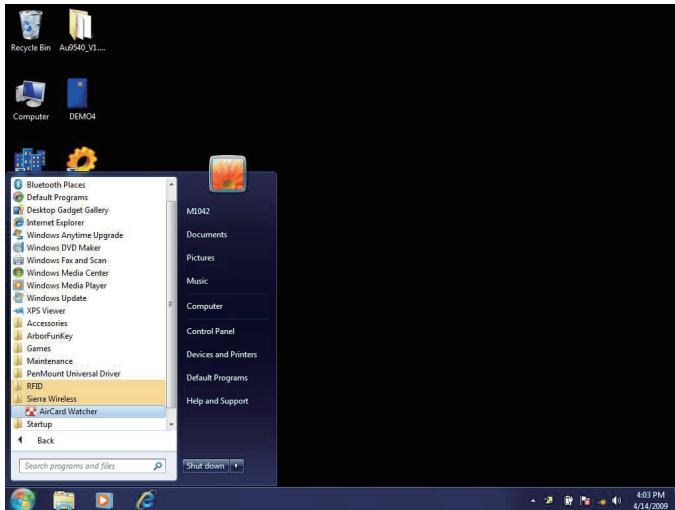
SMR-1040

- Click Select reader. A sub-window will jump out to ask which reader you want to test. Click OK to close the sub-window. Then, click Connect. If your smart card is correctly detected, its information will be shown in box below.



2.7.8 HSUPA (optional)

1. After everything is installed successfully, **AirCard Watcher** icon will appear in **All Programs**. This is HSUPA program, you may also install your own program. To use this program, you must install SIM card before all (see Section 2.4); then, turn on HSUPA by pressing one of the four function keys already set as 3G On/Off (see Section 2.7.3) and execute **AirCard Watcher**.

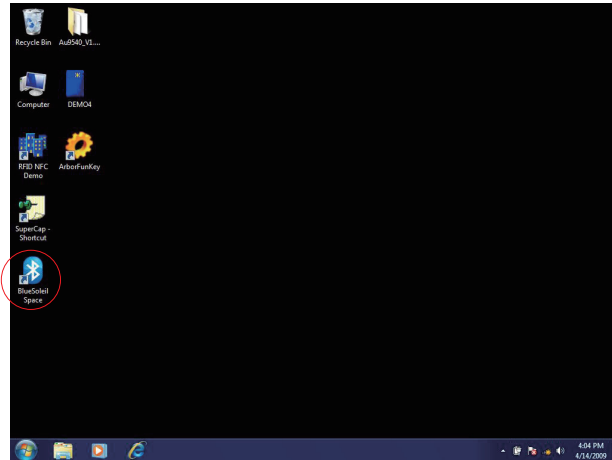


2. **Sierra Wireless AirCard Watcher** Connection Manager software connects you to the Internet with a single click, and keeps you informed of your wireless connection, location and other information using clear indicators for modem status, network status, and more.



2.7.9 Bluetooth

1. After installing bluetooth driver successfully, its icon will appear on desktop. This is bluetooth program, you may also install your own program. Turn on bluetooth by pressing one of the four function keys already set as Bluetooth On/Off (see Section 2.7.3) and execute **BlueSoleil Space** on desktop.

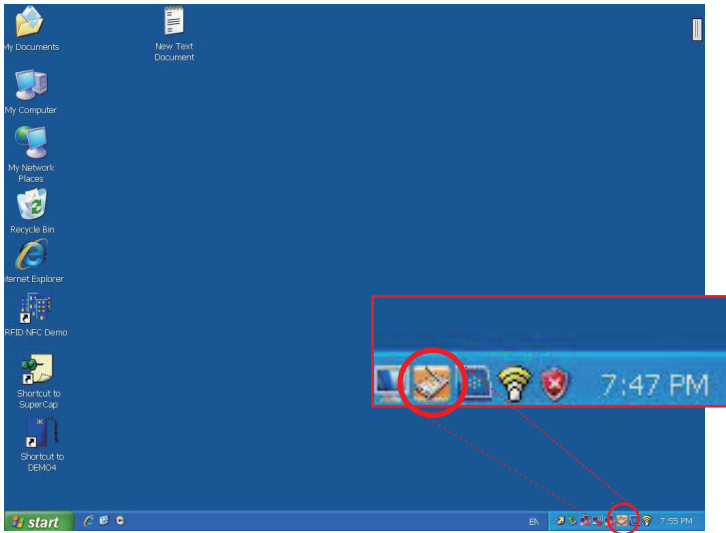


2. Double-click the central golden ball to start/stop searching for surrounding bluetooth devices. Wait for seconds. If any device around this PC is detected, its icon will appear around the central ball. Drag scrollbar to show more bluetooth devices. Click any detected item and upper icons to execute further operation.

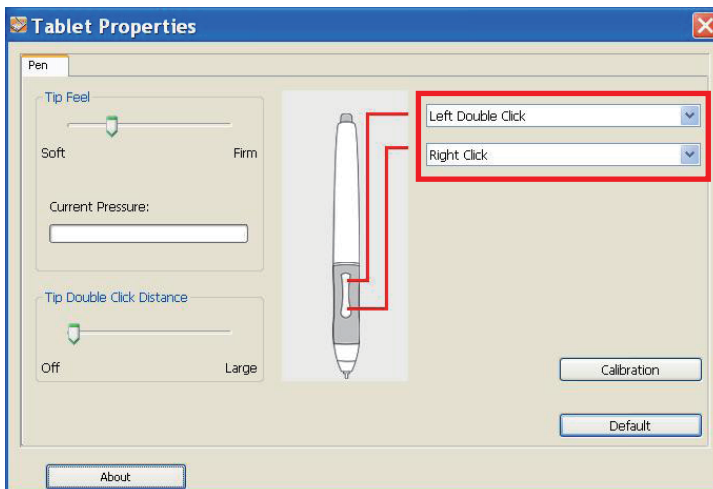


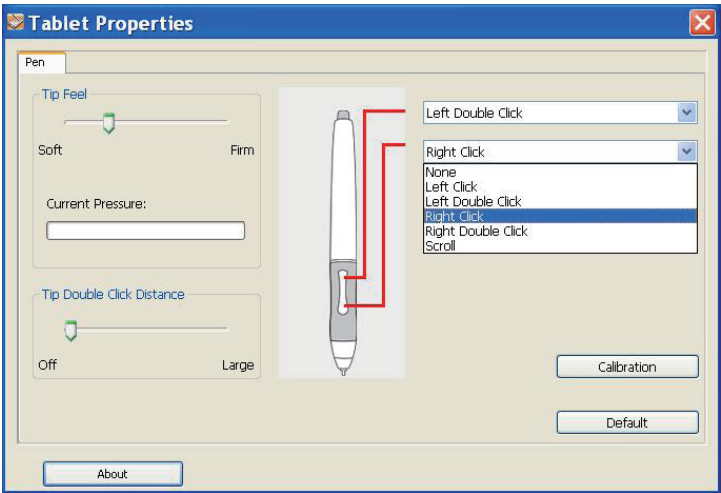
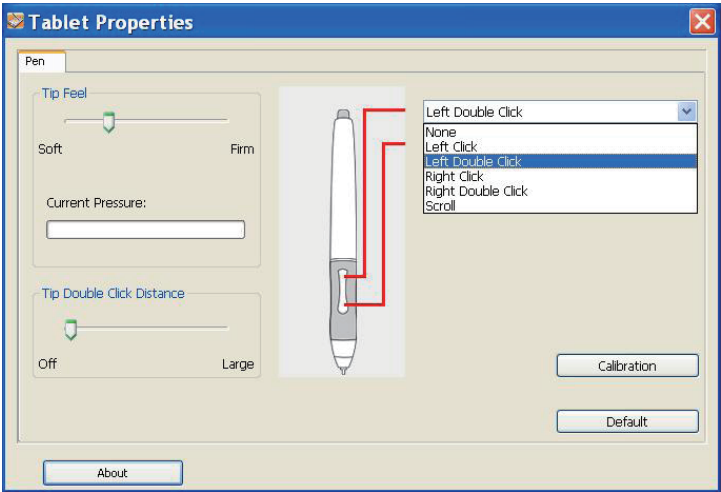
2.7.10 Tablet Properties (only for M1042R)

1. After installing the **Digitizer** driver, a shortcut will be generated on desktop tray. Double click the icon to start calibration.

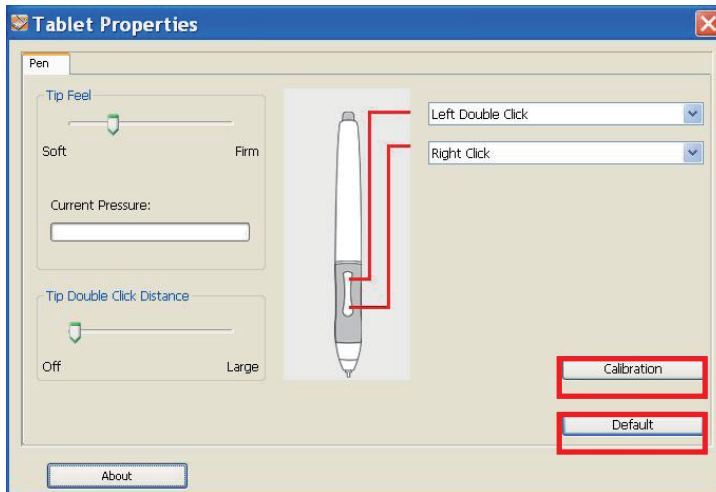


2. The window below instantly pops up. **Table Properties** is a program allowing you to calibrate stylus or change further settings. Firstly, you can set up or change default functions respectively for buttons located on two ends of the narrow rod bulging out from your stylus by selecting from drop-down menus.

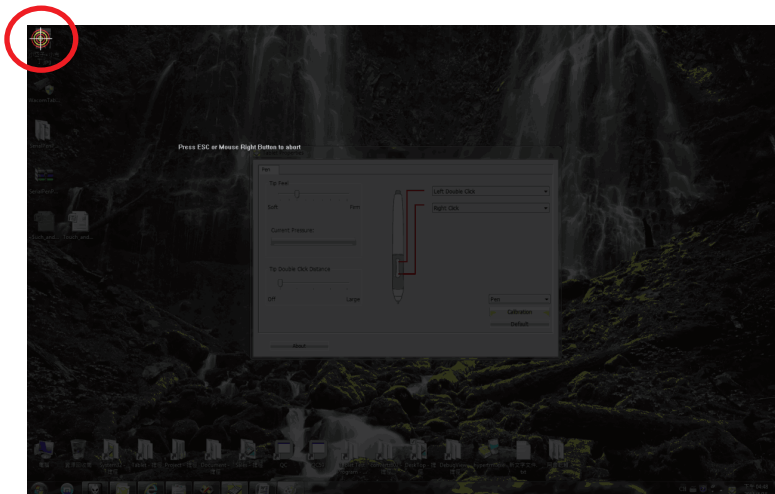




3. In addition, you can also calibrate your stylus for better accuracy. When you feel your stylus is out of control, you may calibrate again to enhance its accuracy. Click **Calibration** button in the picture.



4. Use stylus to click the bull's-eye. You need to click 5 points in a row. If you miss any bull's-eye, right click your mouse or stylus' (default) lower button or "Esc" on keyboard to abort the calibration .



Note: If the calibration is aborted, then the calibration data will disappear. If you want to clear all calibration data, click the "Default" button.

Chapter 3

BIOS

3.1 BIOS Main Setup

The AMI BIOS provides a Setup utility program for specifying the system configurations and settings. The BIOS RAM of the system stores the Setup utility and configurations.

When you turn on the computer, the AMI BIOS is immediately activated.

To enter the BIOS SETUP UTILITY, press “**Delete**” once the power is turned on.

When the computer is shut down, the battery on the motherboard supplies the power for BIOS RAM.

The **Main Setup** screen lists the following information

System Overview

BIOS Version: displays the current version information of the BIOS

Build Date: the date that the BIOS version was made/updated

Processor (auto-detected if installed)

Speed: displays the processor speed

System Memory (auto-detected if installed)

Size: lists the memory size information



Key Commands

BIOS Setup Utility is mainly a key-based navigation interface. Please refer to the following key command instructions for navigation process.

Keystroke	Function
◀ ▶	Move to highlight a particular configuration screen from the top menu bar / Move to highlight items on the screen
▼ ▲	Move to highlight previous/next item
Enter	Select and access a setup item/field
Esc	On the Main Menu – Quit the setup and not save changes into CMOS (a message screen will display and ask you to select “OK” or “Cancel” for exiting and discarding changes. Use “←” and “→” to select and press “Enter” to confirm) On the Sub Menu – Exit current page and return to main menu
Page Up / +	Increase the numeric value on a selected setup item / make change
Page Down -	Decrease the numeric value on a selected setup item / make change
F1	Activate “General Help” screen
F10	Save the changes that have been made in the setup and exit. (a message screen will display and ask you to select “OK” or “Cancel” for exiting and saving changes. Use “←” and “→” to select and press “Enter” to confirm)

System Time

Set the system time.

The time format is:

Hour : 00 to 23

Minute : 00 to 59

Second : 00 to 59

System Date

Set the system date. Note that the ‘Day’ automatically changes when you set the date.

The date format is:

Day : Sun to Sat

Month : 1 to 12

Date : 1 to 31

Year : 1998 to 2099

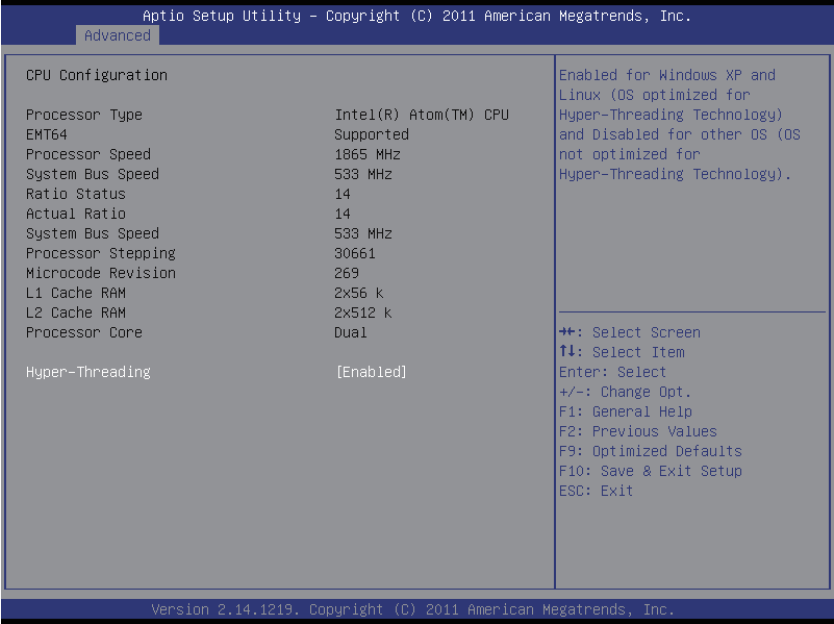
3.2 Advanced Settings

The “Advanced” setting page provides you options to configure the details of your hardware, such as CPU, IDE and USB.



Note: Please pay attention to the “WARNING” part at the left frame before you decide to configure any setting of an item.

3.2.1 CPU Configuration

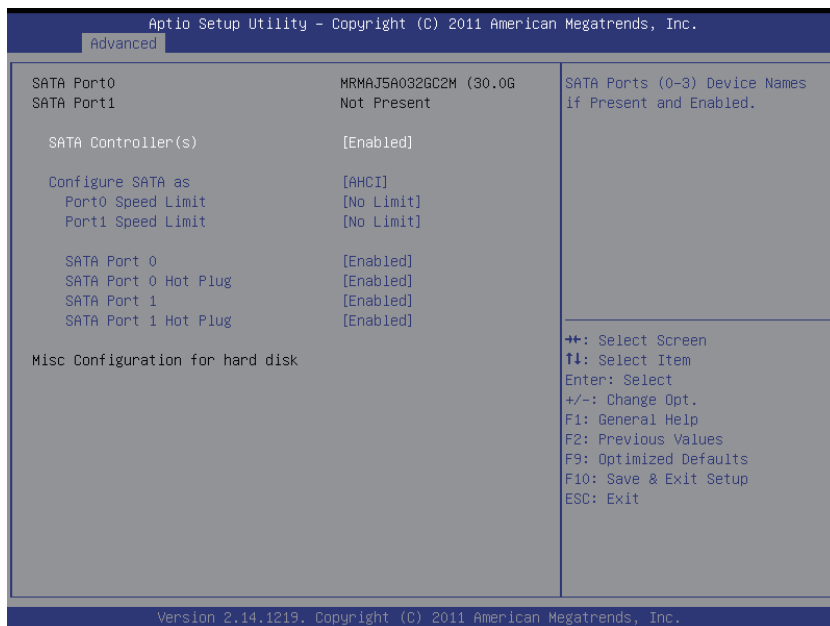


Hyper-Threading Technology

Enabled: activates the Hyper-Threading Technology for higher CPU threading speed. (Recommended)

Disabled: Deactivates the Hyper-Threading Technology.

3.2.2 IDE Configuration



SATA Controller(s)

SATA Ports (0-3) Device Names if Present and Enabled.

Configure SATA as

Select a configuration for SATA Controller.

Port0/1 Speed Limit

Select Port0 AHCI Speed Limit.

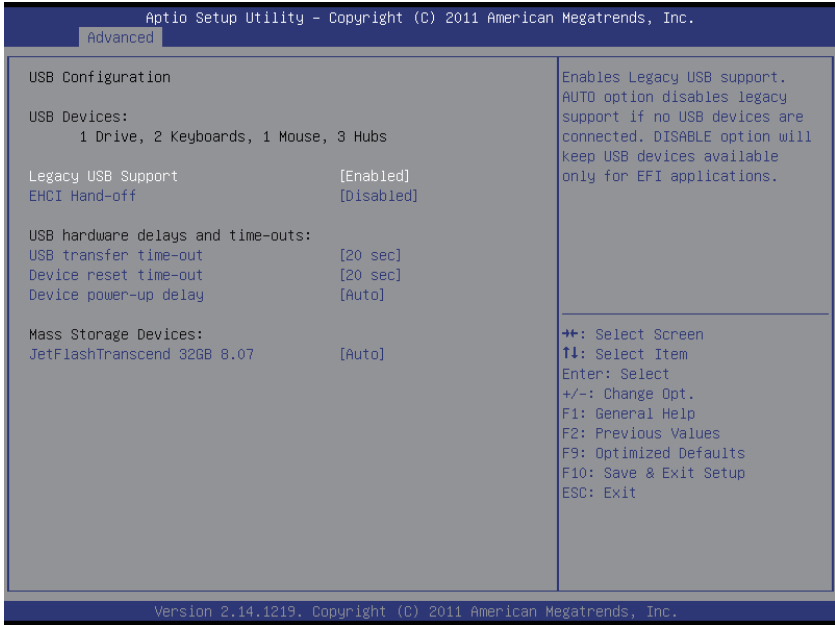
SATA Port0/1

Enable/Disable SATA Port.

SATA Port0/1 Hot Plug

Designates this port as Hot Pluggable.

3.2.3 USB Configuration



Legacy USB Support

Enables support for legacy USB. 'Auto' option disables legacy support if no USB devices are connected. 'Disable' option will keep USB devices available only for EFI applications.

EHCI Hand-Off

This is a workaround for OSES without EHCI hand-off support. The EHCI ownership change should be claimed by EHCI driver.

USB transfer time-out

The time-out value for Control, Bulk, and Interrupt transfers.

Device reset time-out

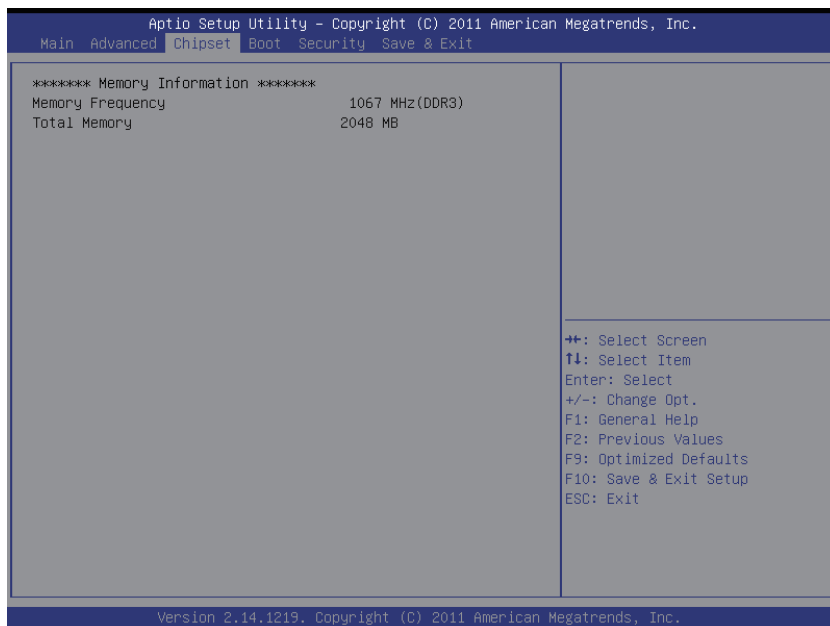
USB mass storage device Start Unit command time-out.

Device power-up delay

Maximum time the device will take before it properly reports itself to the Host Controller. 'Auto' uses default value; for a Root port it is 100 ms, for a Hub port the delay is taken from Hub descriptor.

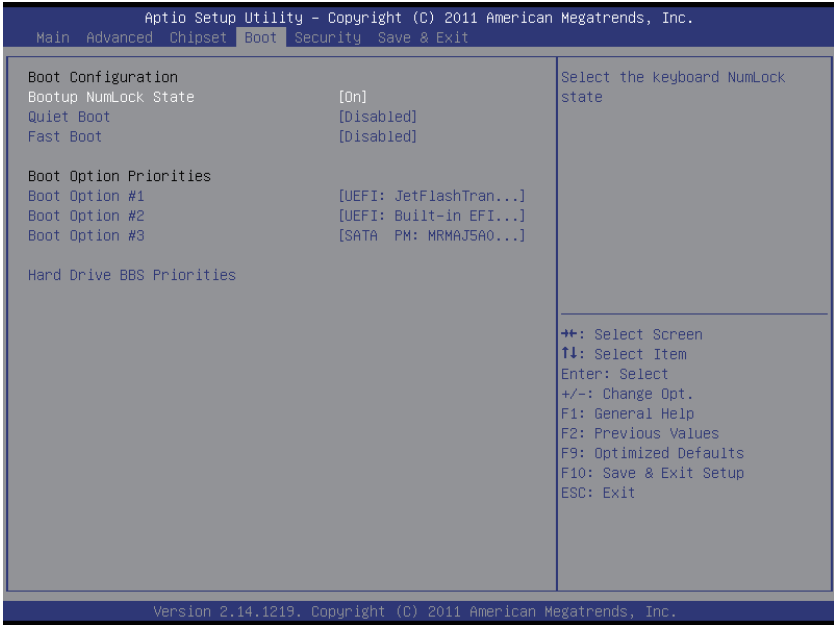
3.3 Chipset Settings

Show memory information.



3.4 Boot Settings

Set your device booting preferences.



Bootup NumLock State

This setting determines whether the Num Lock key should be activated at boot up.

Quiet Boot

This setting determines if the BIOS should hide the normal POST messages with the motherboard or system manufacture's full-screen logo. When it is enabled, the BIOS will display the full-screen logo during the boot-up sequence, hiding normal POST messages. When it is disabled, the BIOS will display the normal POST messages instead of the full-screen logo.

Fast Boot

Enables or disables boot with initialization of a minimal set of devices required to launch active boot option. Has no effect for BBS boot options.

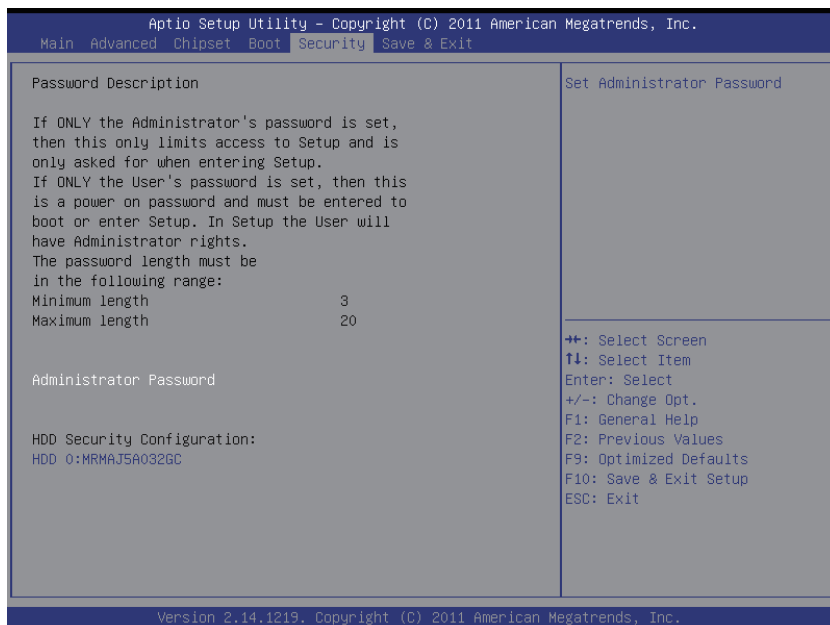
Boot Option

Set the system boot order.

Hard Drive BBS Priorities

Set the order of the legacy devices in this group.

3.5 Security



Administrator Password

Set **Change Administrator Password** to enter and change the options of the setup menus. When you select this function, the following message will appear at the center of the screen to assist you in creating a password.

Enter New Password:

Type the password, up to six characters in length, and press <Enter>. The password typed now will clear any previously entered password from CMOS memory. You will be asked to confirm the password. Type the password again and press <Enter>. You may also press <ESC> to abort the selection and not enter a password.

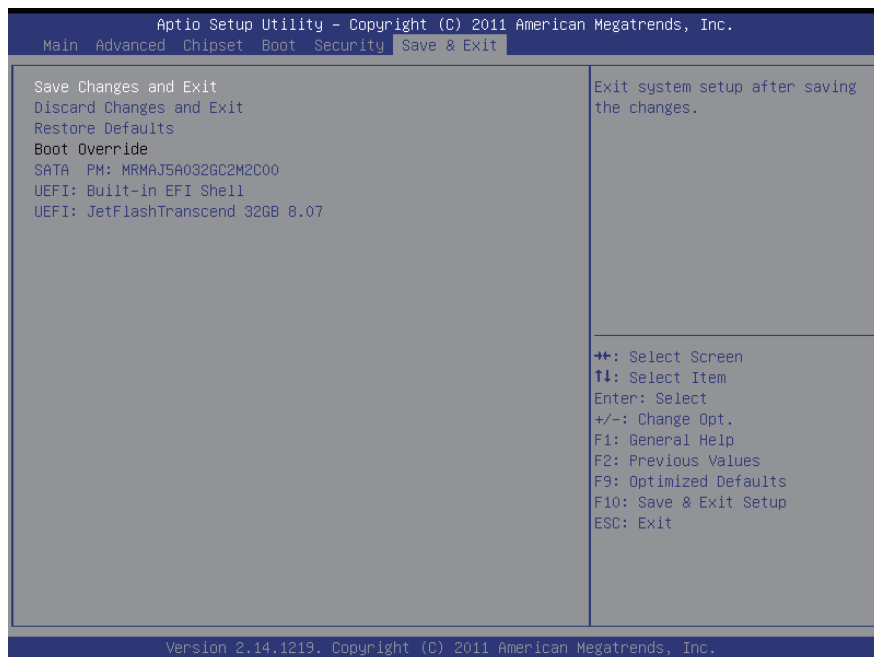
With a password created, a Password Check item appears. Set this item to **Setup**, you will be prompted to enter the password every time you try to enter the BIOS Setup utility. This prevents an unauthorized person from changing any part of your system configuration.

You can also have the BIOS to request a password every time your system is rebooted by setting it to **Always**. This would prevent unauthorized use of your computer.

To clear the password, just leave the field blank and press <Enter> when you are prompted to enter a new password. Once the password is cleared, the following message will appear at the center of the screen.

Password Uninstalled.

3.6 Exit Options



Save Changes and Exit

Pressing <Enter> on this item and it asks for confirmation:

Save configuration changes and exit setup?

Pressing <OK> stores the selection made in the menus in CMOS - a special section of memory that stays on after you turn your system off. The next time you boot your computer, the BIOS configures your system according to the Setup selections stored in CMOS. After saving the values the system is restarted again.

Discard Changes and Exit

Exit system setup without saving any changes.

<ESC> key can be used for this operation.

Restore Defaults

Restore system to factory default.

Pressing <Enter> on this item and it asks for confirmation prior to executing this command.



Appendix

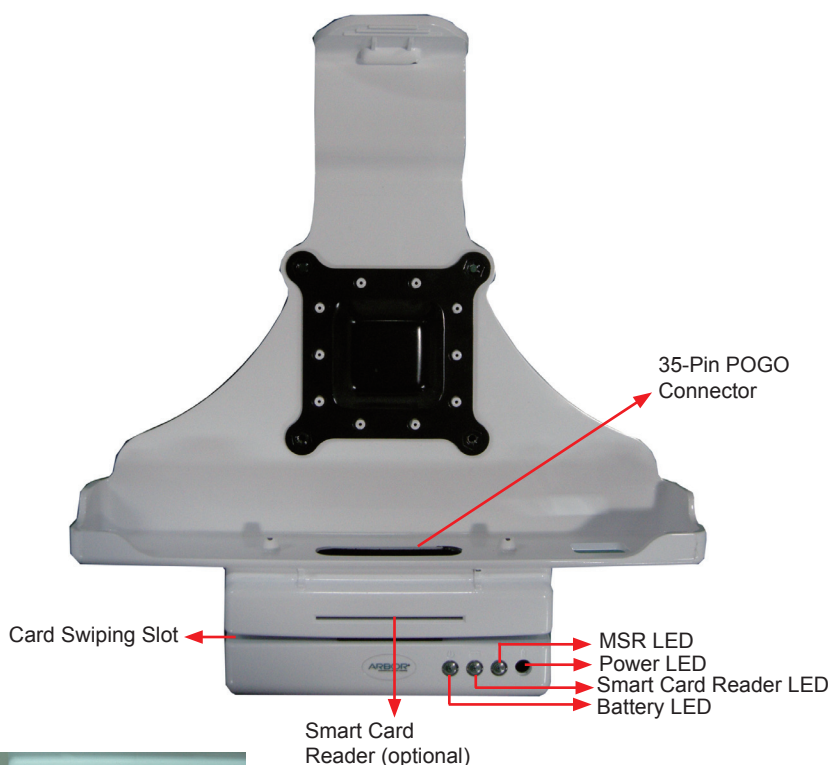
Optional Accessories

1. RAM-ball Mount Docking Station (VMC-1040)

1.1 Introduction

The docking station comes in as an accessory option for M1042. M1042 can be installed on the docking station that can be further wall-mounted for more secured operation. The docking station provides extra I/O ports for the tablet PC so that it can connect to additional peripherals. Go through this section to find out more about VMC-1040.

Front View



Swipe a card through the reader either from left to right or right to left, with the magnetic stripe facing down.



Insert the smart card into the reader with chip facing up.

LED Indicators Description

Battery LED

Color	Status	Description
Green (charged 70% or above)	On	The external battery has been fully charged or stops charging temporarily because the internal battery with higher priority is charging.
	Blinking	The external battery is charging.
Amber (charged 20 to 70%)	On	The external battery stops charging temporarily because the internal battery with higher priority is charging.
	Blinking	The external battery is charging
Red (charged 20% or below)	On	The external battery stops charging temporarily because the internal battery with higher priority is charging.
	Blinking	no power

SmartCard Reader LED

Color	Status	Description
Green	On	card data detected
	Off	no activity

MSR LED

Color	Status	Description
Green	On	card data detected
	Off	no activity

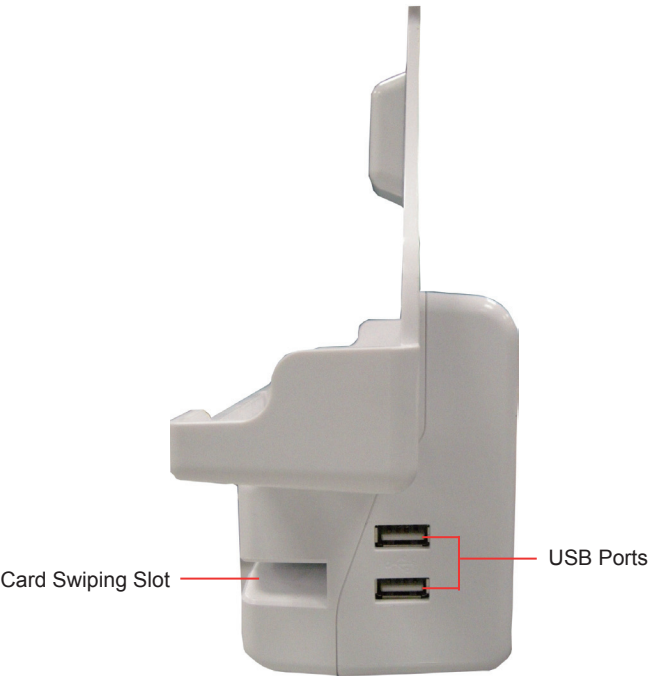
Power LED

Color	Status	Description
Green	On	The tablet is placed on the docking station and the adapter is connected.
	Off	no power input

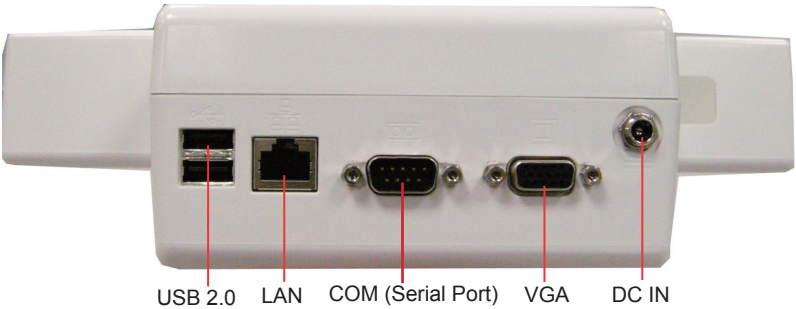
Top View



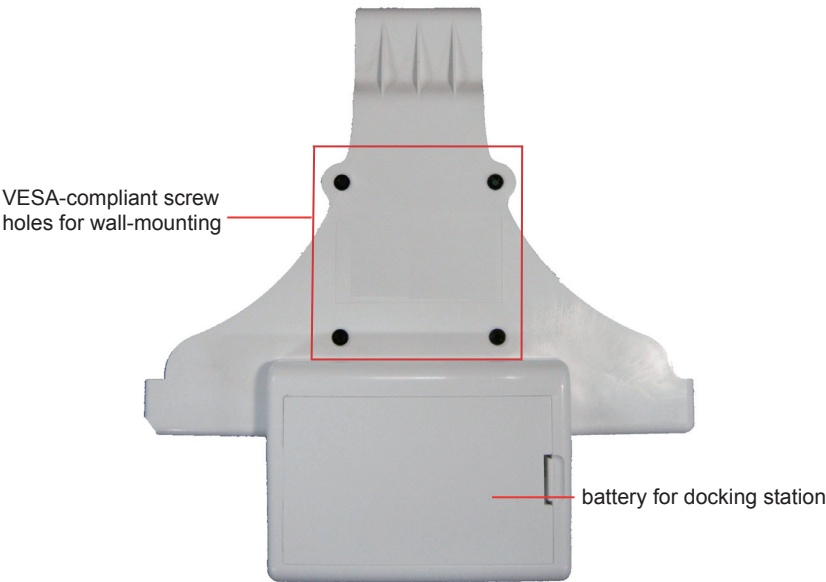
Side View



Bottom View



Rear View



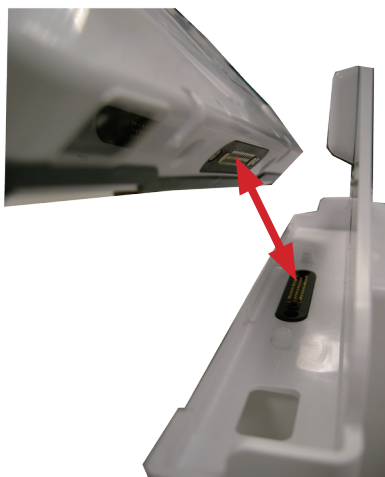
1.2 Installing M1042 on VMC-1040

Follow the guide in this section to install the M1042 tablet PC on its docking station.

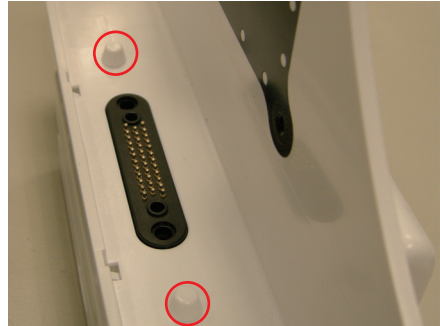
1. When placing the M1042 tablet PC onto VMC-1040, place from a slanted direction. Remember to take off hand strap before all. (See Section 2.5)



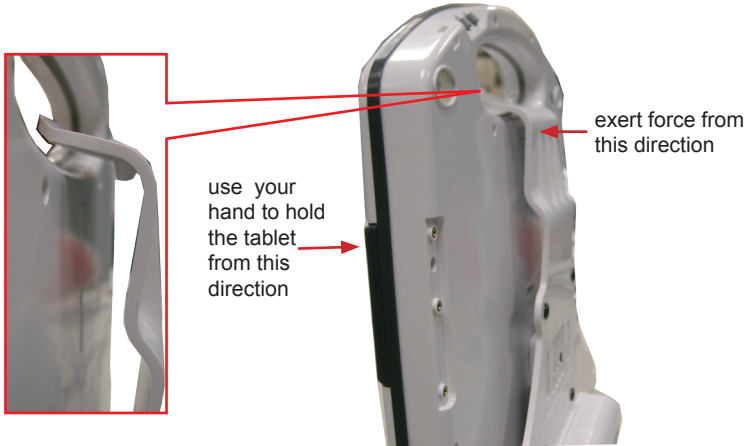
2. Make sure you align the 35-pin POGO connectors of the tablet and VMC-1040.



3. You may notice that there are two small hollows beside the POGO connector on M1042, and two small bulging poles near the POGO connector on VMC-1040. These will help you fit the tablet onto VMC-1040.



4. Once the tablet has been positioned on VMC-1040, exert pressure slightly to the hinge until you hear a light “click” sound, which means the hinge has successfully secured the tablet PC.



Note: When you place the M1042 with dual batteries worn out onto the docking station, you can't boot M1042 with the battery on docking station. Use the same adapter for M1042 and insert it into the DC power input on the bottom of VMC-1040; then you can boot M1042.

1.3 Removing M1042 from VMC-1040

To remove M1042 tablet PC from VMC-1040, use your finger to push the hinge upward and lift the tablet up.

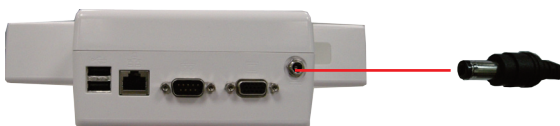


1.4 Charging via VMC-1040

When placing the M1042 onto VMC-1040, to charge VMC-1040, simply use the same adapter for M1042 and insert it into the DC power input on the bottom of VMC-1040 .



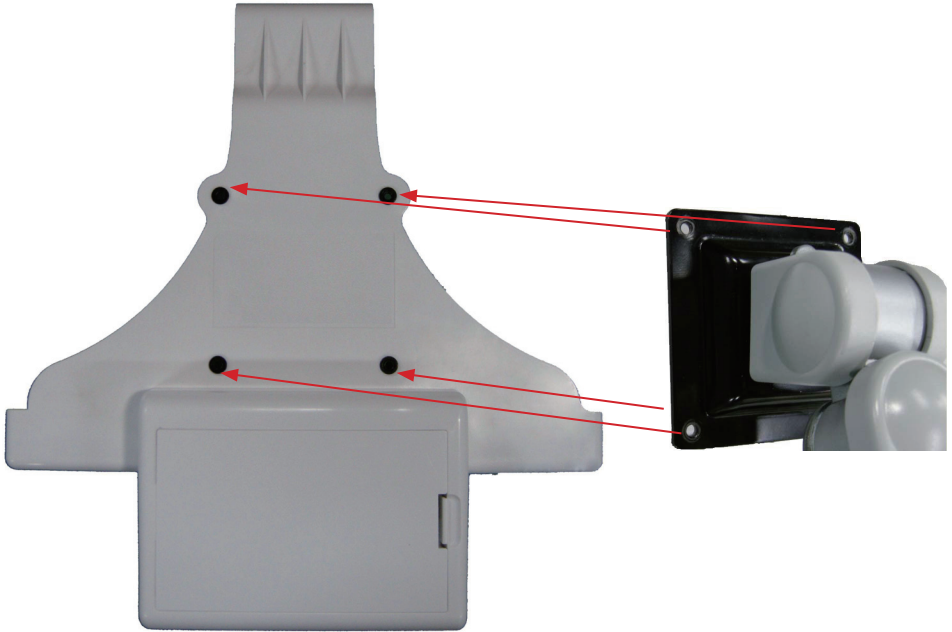
Note: When placing the M1042 onto VMC-1040, if you insert DC power input in M1042 itself's power jack, its battery can't be charged.



1.5 VESA Wall-mounting

The docking station can be wall-mounted via the VESA 75 x 75-compliant screwholes at the back. Follow the illustration below for how to align the screwholes.

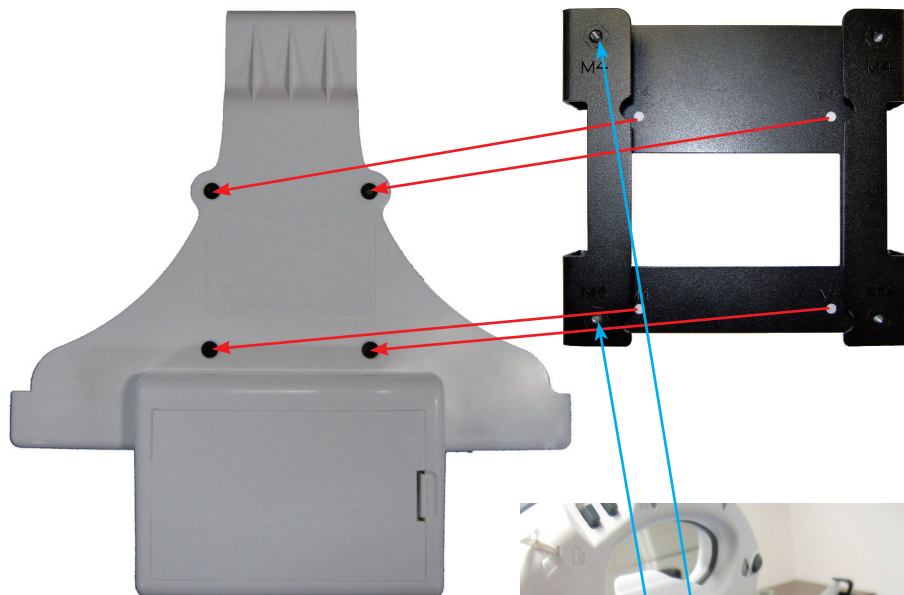
Recommended screw size: M4



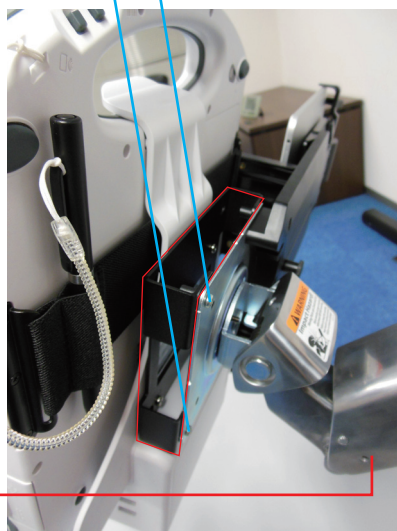
1.6 VESA Mount Transfer Bracket (VSB-1040)

You may also attach the PC to mechanical arm through VMC-1040, but owing to mechanical design restriction, you need to mount the additional VSB-1040 between VMC-1040 and mechanical arm to avoid obstruction from battery case. Fix VSB-1040 on VMC-1040 through VESA 75 x 75 screw holes, that is, the inner four holes; then, fix arm to VSB-1040 through the outer VESA 100 x 100 screw holes.

Recommended screw size: M4



Mechanical arm can't extend completely due to lower prominent battery case.



2. Conversion Bracket (DMK-1040)

2.1 Introduction

Front View



Rear View



2.2 Installing M1042 on DMK-1040

VMC-1040 can be further mounted on DMK-1040 via the VESA 75 x 75-compliant screw holes at the back, too. Follow the illustration below for how to align the screw holes. With DMK-1040, you can erect M1042 on a surface steadily. Remember, you can't lock M1042 on DMK-1040 without VMC-1040.

Recommended screw size: M4



3. Desktop Docking Station (DTC-1040)

3.1 Introduction

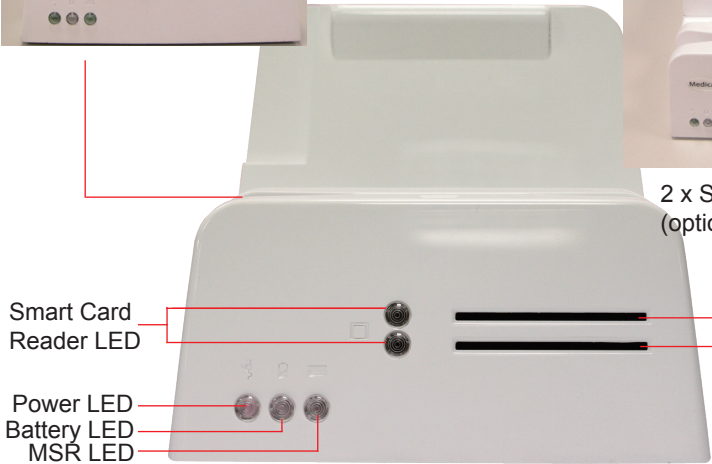
The desktop docking station comes in as an accessory option for M1042. The desktop docking station provides extra I/O ports for M1042 so that it can connect to additional peripherals. Go through this section to find out more about DTC-1040.

Front View

Swipe a card through the reader either left to right or right to left, with the magnetic stripe facing down.



Insert the smart card into the reader with chip facing up.



2 x Smart Card Reader (optional)

Top View

35-Pin POGO
Connector



LED Indicators Description

Battery LED

Color	Status	Description
Green (charged 70% or above)	On	The external battery has been fully charged or stops charging temporarily because the internal battery with higher priority is charging.
	Blinking	The external battery is charging.
Amber (charged 20 to 70%)	On	The external battery stops charging temporarily because the internal battery with higher priority is charging.
	Blinking	The external battery is charging
Red (charged 20% or below)	On	The external battery stops charging temporarily because the internal battery with higher priority is charging.
	Blinking	no power

SmartCard Reader LED

Color	Status	Description
Green	On	card data detected
	Off	no activity

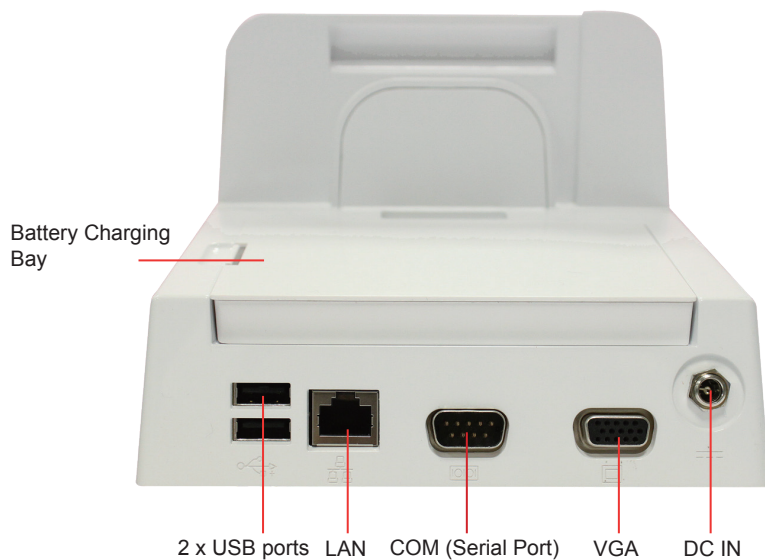
MSR LED

Color	Status	Description
Green	On	card data detected
	Off	no activity

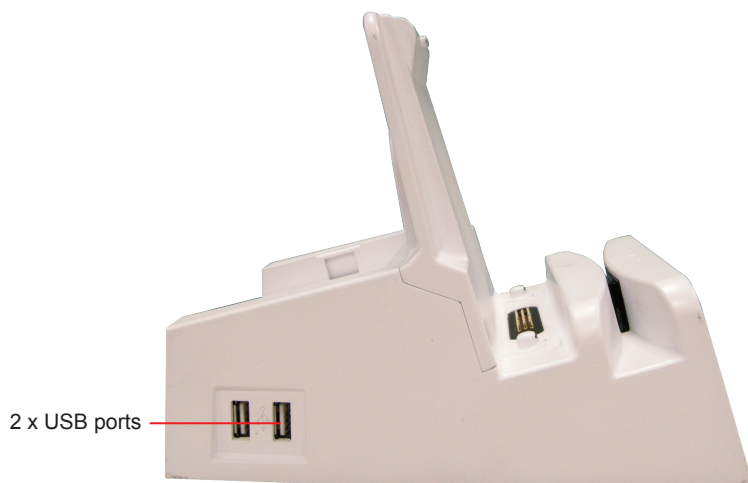
Power LED

Color	Status	Description
Green	On	The tablet is placed on the docking station and the adapter is connected.
	Off	no power input

Rear View

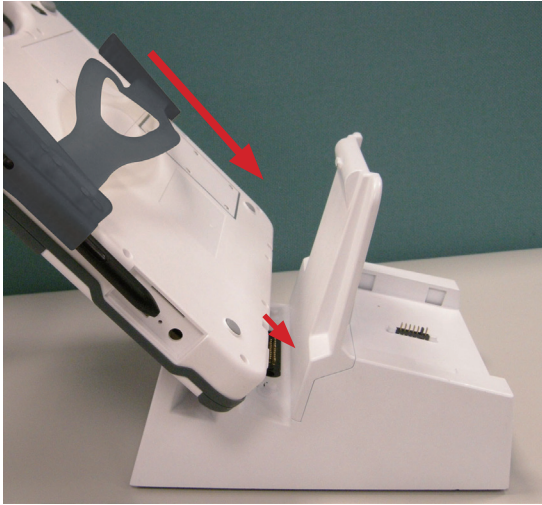


Side View

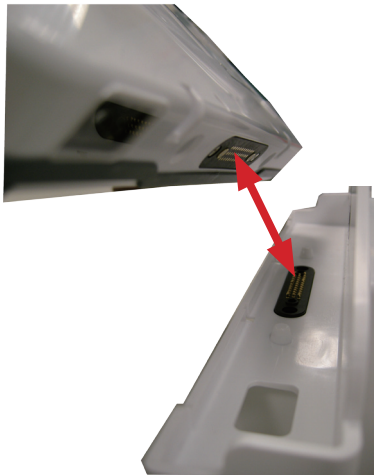


3.2 Installing M1042 on DTC-1040

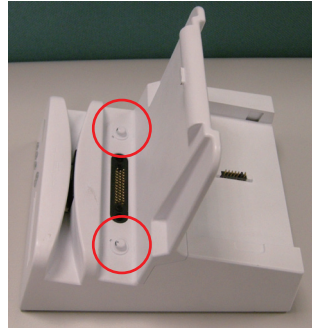
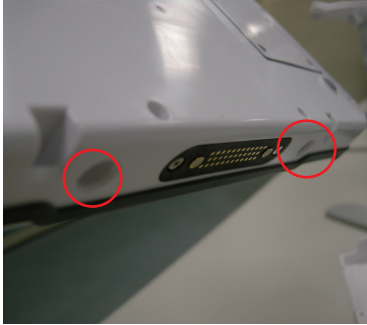
1. When placing M1042 onto DTC-1040, place it from a slanted direction.



2. Make sure you align the 35-pin POGO connectors of M1042 and DTC-1040.



3. You may notice that there are two small hollows beside the POGO connector on the tablet, and two small bulging poles near the POGO connector on the desktop docking station. These will help you fit M1042 onto DTC-1040.



Note: When you place M1042 with dual batteries worn out onto DTC-1040, you can't boot M1042 with the battery on DTC-1040. Use the same adapter for M1042 and insert it into the DC power input on the back of DTC-1040; then you can boot M1042.

3.3 Charging via DTC-1040

When placing M1042 onto DTC-1040, to charge DTC-1040, simply use the same adapter for M1042 and insert it into the DC power input on the back.



Note: When placing M1042 onto DTC-1040, if you insert the DC power input into M1042's power jack, its battery can't be charged.

This page is intentionally left blank.