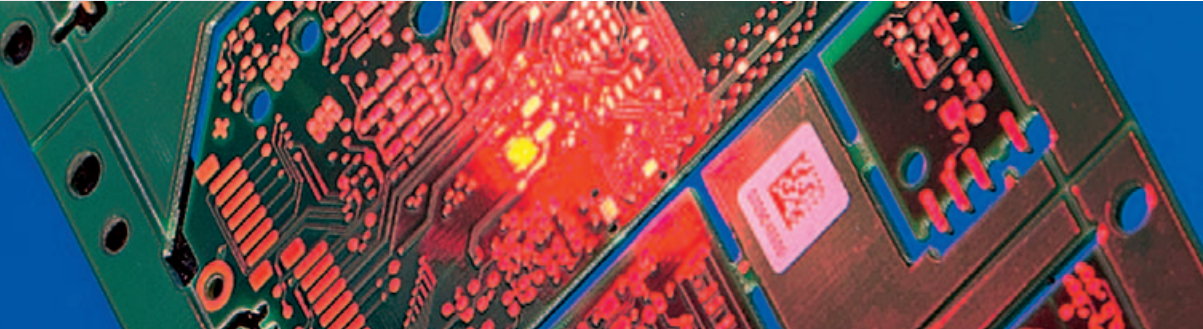


ICR803

Automatic identification in highly compact housing



LED illumination, newest Imaging Technology, USB or RS-232 interface – all functions necessary for reading 1D or 2D codes are already included inside the compact housing of the ICR803. It only measures 49 x 40 x 25 mm³. With only 37 g it also is a real lightweight. Everywhere the space for mounting is limited, the ICR803 is the ideal choice. Bar codes, stacked codes, 2D codes, RSS codes or image acquisition – the ICR803 reads omnidirectional, meaning

in every code orientation. Therefore a defined code adjustment is not necessary.

The ICR803 can be integrated in different devices. Examples are clinical analysers, electronic kiosks, robot systems, access controls as well as information and transaction terminals.

Through an external push-button the ICR803 can be triggered manually. The device also can be controlled via serial commands.

Your benefits:

- Fast and reliable code identification
- Reading of 1D codes, stacked codes, 2D codes, RSS codes, OCR-A/B and image acquisition with only one device
- Easy and fast installation and configuration
- No moving parts, robust design

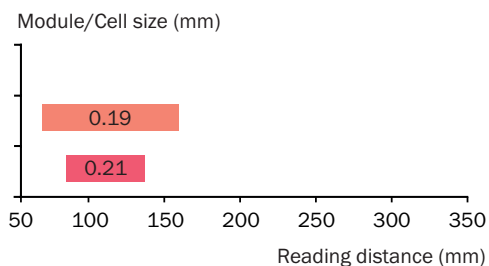
The ICR803 at a glance:

- Omnidirectional code reading
- Optical aiming line
- Compact dimensions
- Only 37 g (without cable)
- USB and RS-232 versions
- RoHS and WEEE conform
- Triggering via button, presentation mode, serial commands or hardware trigger via SICK connection technology

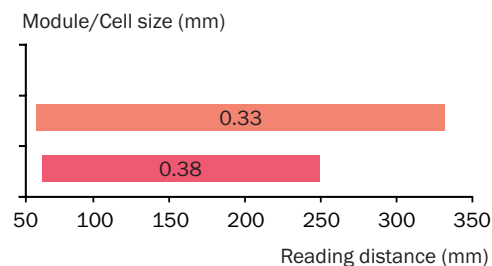
Technical data

Typ	ICR803
Scanner design	2D Image Code Reader
Light source	
LED illumination	Visible red light (630 nm)
LED aiming line	Visible green light (530 nm)
Ambient light compatibility	Max. 100,000 lx
Resolution	752 x 480 Pixel
Code types	
Linear	Codabar, Code 39, Code 32 PARAF, Code 93, Code 2 of 5, Code 11, Code 128, Telepen, UPC/EAN, RSS14, RSS-Limited&Expanded, Codablock, Posicode, Interleaved 2 of 5, Postal Codes
Stacked	PDF417
2D	Aztec, Data Matrix, Maxicode, QR Code
OCR	OCR-A, OCR-B
Image acquisition	BMP, JPEG, TIFF
Object velocity	Max. 0.1 m/s
Interfaces	USB keyboard wedge, USB serial, RS-232 TTL
Operating voltage	5 V DC
Weight	37 g
Dimensions	49 mm x 40 mm x 25 mm
Operating temperature	0 ... 50 °C

Reading diagram



Reading field diagram for ICR803-Axxx
 ■ = 1D, ■ = 2D



Reading field diagram for ICR803-Bxxx
 ■ = 1D, ■ = 2D

Order information

Type	Description	Order no.
ICR803-A0201	2D Image Code Reader ICR803-A0201, optical version A, RS-232 interface	6034210
ICR803-A0271	2D Image Code Reader ICR803-A0201, optical version A, USB interface	6034212
ICR803-B0201	2D Image Code Reader ICR803-A0201, optical version B, RS-232 interface	6034211
ICR803-B0271	2D Image Code Reader ICR803-A0201, optical version B, USB interface	6034213
	Straight USB cable, 2.4 m length	6028232
	Straight RS-232 TTL cable, 2.4 m length, external power supply necessary	6033047
	Straight RS-232 TTL cable, 2.4 m length, power supply on pin 9	6028186
CDB405-001	Connection module with integrated 24/5 V DC converter	1027093
	Straight RS-232 TTL cable, 2 m length, for connection of ICR803 to CDB405-001	6034935
	Additional products such as interface cables and power supply units	On request

Accessories

Accessories can be found on Page 235

ICR803**Miniature 2D-Code Reader with Integrated Decoder**

Order no.	Type	Description
6034941	PS5U-42E	5 V DC power supply, input 100 ... 240 V AC incl. power cord with continental european safety plug
6034942	PS5U-43E	5 V DC power supply, input 100 ... 240 V AC incl. power cord with UK plug
6034354		Power cord with plain Euro plug to C13 socket
6034355		Power cord with UK plug
6034356		Power cord with USA plug
6034357		Power cord with Australian plug
6012109		Cable 2.40 m for RS-232 TTL, 9-pin D-Sub receptacle, additional power supply necessary, (42203758-04 EP)
6028186		Cord RS-232 2.4 m, 9-pin D-Sub-socket (42203758-03S)
6025955		Spiral cord RS-232 TTL, 2.4 m, 9-pin D-Sub receptacle, power on pin 9
6025954		Spiral cord RS-232 TTL, 4.5 m, 9-pin D-Sub receptacle
6028232		Cord 2.30 m for USB, plug type A (42206161-01)
6032516		Spiral cord USB, 2.80 m, plug type A
6034935		Cord RS-232, for connection to ICR803 (only RS-232 versions) on CDB405
1027093	CDB405-001	Terminal module CDB405-001, integrated 24 V DC/5 V converter

ICR840-2**2D-Code Reader with Integrated Decoder**

Order no.	Type	Description
2025491		Mounting bracket with mounting material (2 x self-locking screw M5 x 16)
2039465		Mounting bracket with adjustable skew angle, incl. mounting material (2 x self-locking screw M5 x 16)
2034076		External illumination ICR840 (focus position 80 mm)
2040503		External illumination ICR840 (focus position 50 mm)
6025894		Connection cable for external illumination, 4-pin M8 socket, length 2 m
6025895		Connection cable for external illumination, 4-pin M8 socket, length 5 m
6025896		Connection cable for external illumination, 4-pin M8 socket, length 10 m
2014054		Data connection cable (RS-232) for CLV/ICR/CDB/CDM to PC, 3 m, with 2 x 9-pin D-Sub receptacle
6010075		Extension cable, 2 m, 15-wired, shielded, with 15-pin D-Sub-HD plug/receptacle
6010137		As 6010075, but with 15-pin D-Sub-HD plug/open end
6010088		Data cable for the extension up to 3 m, Ø 6.6 mm, 15 x 0.09 mm², shielded, available per meter
6026083		Ethernet data cable 2 x RJ45
6026084		Ethernet crossover cable 2 x RJ45
6010019		D-Sub female connector, 15-pin HD (receptacle), hand soldered terminal
6010020		D-Sub female connector, 15-pin HD (plug), hand soldered terminal
6009438		D-Sub plug housing (metal) for 9-pin/15-pin HD inputs
1026358		AMV40 with interface converter (RS-422 to CL 20 mA)
2029112		CD-ROM Manuals & Software

Terminal modules/power supply see CDB620, CDM420

Bus connection modules see CMF400

Pulse photoelectric switches see photoelectric switches catalogue